

- LEGEND**
- 1' x 4' FLUORESCENT LIGHT
 - 4' x 4' FLUORESCENT LIGHT
 - 2' x 4' FLUORESCENT LIGHT
 - PENDANT LIGHT
 - SURFACE MOUNTED FLUORESCENT FIXTURE
 - SURFACE MOUNTED LIGHT FIXTURE
 - RECESSED DIRECTIONAL LIGHT FIXTURE
 - RECESSED LIGHT FIXTURE
 - RECESSED LIGHT FIXTURE
 - SPEAKER
 - HVAC DIFFUSER

REFLECTED CEILING PLAN ① — 1/8"=1'-0"
PLAN

COPYRIGHT © CKR ENGINEERS, BIRMINGHAM, AL. ALL RIGHTS RESERVED. UNAUTHORIZED COPYING AND/OR USE IS ILLEGAL AND SUBJECT TO PROSECUTION.

DRAWING	ISSUE	DATE	BY
1			
2			
3			
4			

PROJECT ARCHITECT	
PROJECT ENGINEER	
CO	
DRAWN BY	
DATE	10/6/2022



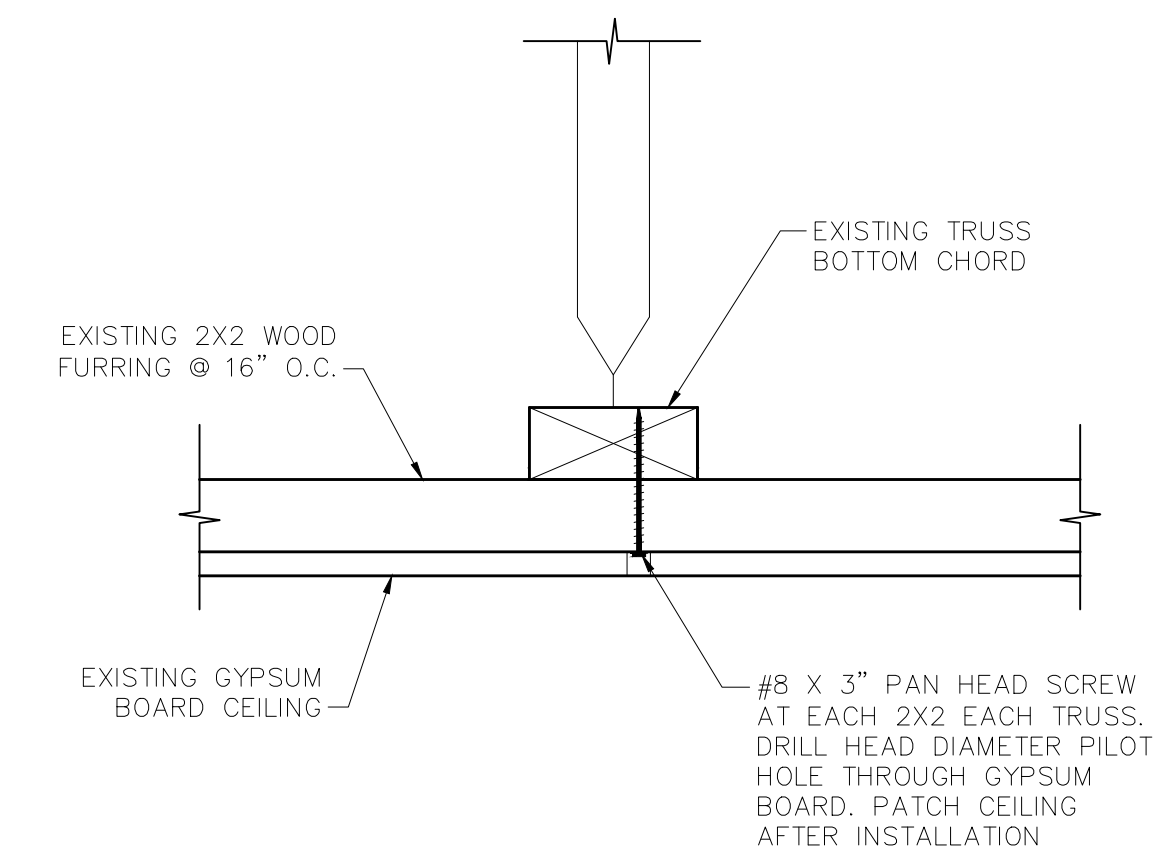
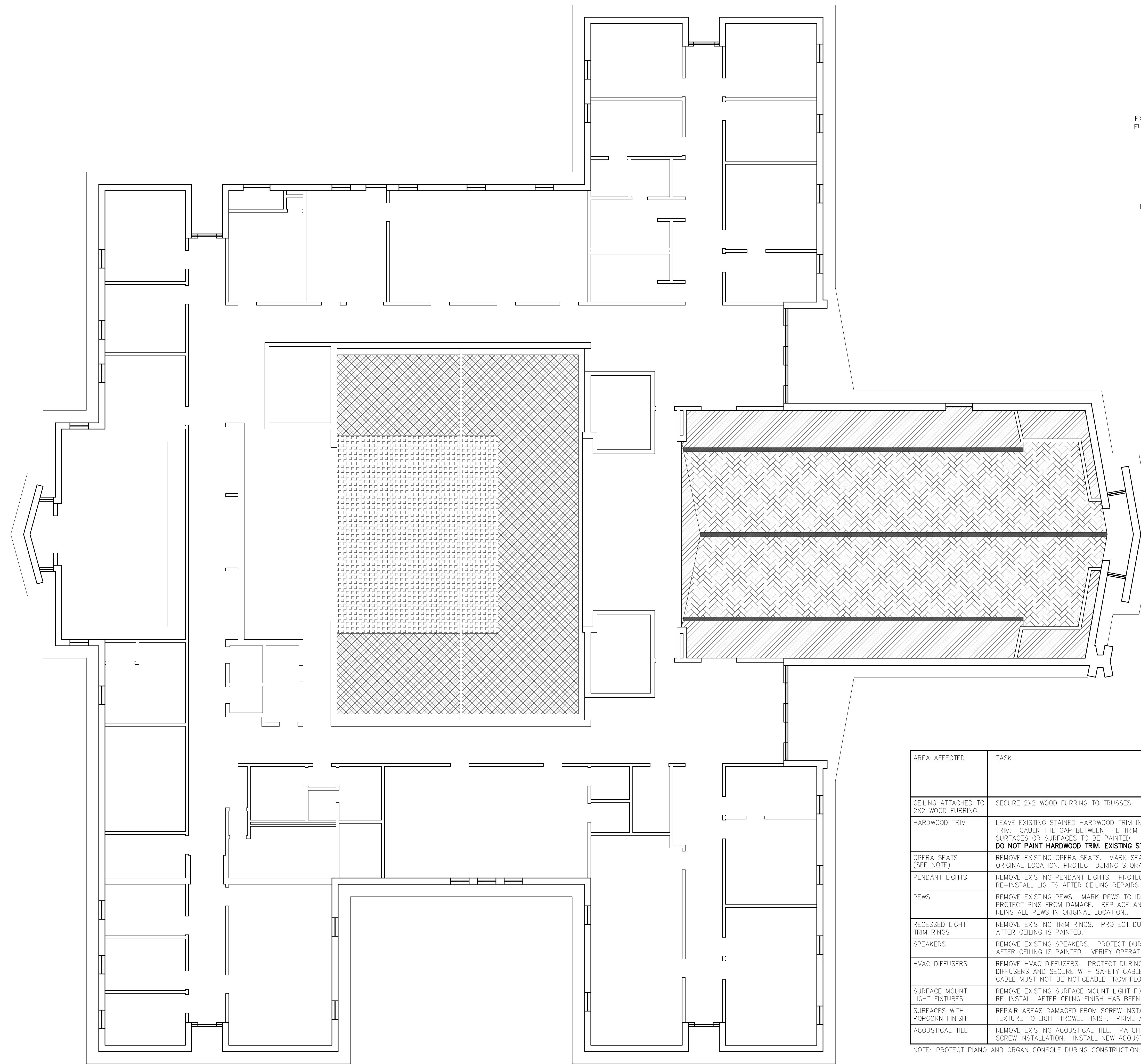
1295 NORTH STATE STREET
 OREM, UTAH 84057
 PHONE: (801) 222-0922
 FAX: (801) 222-0902



PROJECT: PIONEER 1, 4, PROVO YSA 217
 376 NORTH 700 WEST
 PROVO, UTAH

SHEET TITLE: REFLECTED CEILING PLAN

PROJECT NO. 22347
 DRAWING NO. S1.1



DETAIL ② — 3"=1'-0"
DET4

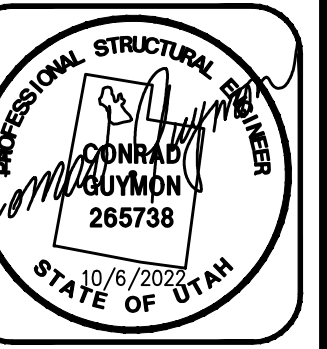
REFLECTED CEILING PLAN ① — 1/8"=1'-0"
PLAN

AREA AFFECTED	TASK	VERTICAL AND NEAR VERTICAL SURFACES	TILED AREAS	EXPOSED PAINT WITH RECESSED FIXTURES	EXPOSED PAINT WITH PENDANT FIXTURES	EXPOSED PAINT WITH SURFACE MOUNT FIXTURES
CEILING ATTACHED TO 2X2 WOOD FURRING	SECURE 2X2 WOOD FURRING TO TRUSSES. SEE DETAIL 2/S1.2		X		X	X
HARDWOOD TRIM	LEAVE EXISTING STAINED HARDWOOD TRIM IN PLACE. REPAIR ANY DAMAGED TRIM. CAULK THE GAP BETWEEN THE TRIM AND ADJACENT PAINTED SURFACES OR SURFACES TO BE PAINTED. DO NOT PAINT HARDWOOD TRIM. EXISTING STAINED FINISH IS TO REMAIN.	X	X	X	X	
OPERA SEATS (SEE NOTE)	REMOVE EXISTING OPERA SEATS. MARK SEATS TO IDENTIFY THE ORIGINAL LOCATION. PROTECT DURING STORAGE. REINSTALL IN ORIGINAL LOCATION.				X	
PENDANT LIGHTS	REMOVE EXISTING PENDANT LIGHTS. PROTECT DURING STORAGE. RE-INSTALL LIGHTS AFTER CEILING REPAIRS ARE COMPLETE.				X	
PEWS	REMOVE EXISTING PEWS. MARK PEWS TO IDENTIFY THE ORIGINAL LOCATION. PROTECT PINS FROM DAMAGE. REPLACE ANY DAMAGED PINS AS REQUIRED. REINSTALL PEWS IN ORIGINAL LOCATION.			X	X	
RECESSED LIGHT TRIM RINGS	REMOVE EXISTING TRIM RINGS. PROTECT DURING STORAGE. RE-INSTALL AFTER CEILING IS PAINTED.			X	X	X
SPEAKERS	REMOVE EXISTING SPEAKERS. PROTECT DURING STORAGE. RE-INSTALL AFTER CEILING IS PAINTED. VERIFY OPERATION OF THE SOUND SYSTEM.		X	X	X	X
HVAC DIFFUSERS	REMOVE HVAC DIFFUSERS. PROTECT DURING STORAGE. RE-INSTALL DIFFUSERS AND SECURE WITH SAFETY CABLE TO INSIDE OF DUCT. SAFETY CABLE MUST NOT BE NOTICEABLE FROM FLOOR LEVEL.	X		X		
SURFACE MOUNT LIGHT FIXTURES	REMOVE EXISTING SURFACE MOUNT LIGHT FIXTURES. PROTECT DURING STORAGE. RE-INSTALL AFTER CEILING FINISH HAS BEEN RESTORED.		X	X		X
SURFACES WITH POPCORN FINISH	REPAIR AREAS DAMAGED FROM SCREW INSTALLATION AND ASBESTOS ABATEMENT. TEXTURE TO LIGHT TROWEL FINISH. PRIME AND PAINT.	X		X	X	
ACOUSTICAL TILE	REMOVE EXISTING ACOUSTICAL TILE. PATCH AREAS DAMAGED FROM SCREW INSTALLATION. INSTALL NEW ACOUSTICAL TILE.		X			

NOTE: PROTECT PIANO AND ORGAN CONSOLE DURING CONSTRUCTION.

DRAWING	ISSUE	DATE	BY
1			
2			
3			
4			

PROJECT ARCHITECT	
PROJECT ENGINEER	
CO	
DRAWN BY	
DR	
DATE	10/16/2022



1295 NORTH STATE STREET
OREM, UTAH 84057
PHONE: (801) 222-0922
FAX: (801) 222-0902



PROJECT: PIONEER 1, 4, PROVO YSA 217
376 NORTH 700 WEST
PROVO, UTAH

SHEET TITLE: REFLECTED CEILING PLAN

PROJECT NO. 22347
DRAWING NO. S1.2

COPYRIGHT © CKR ENGINEERS. DESIGN BY CKR. ALL RIGHTS RESERVED. UNAUTHORIZED COPYING AND/OR USE IS ILLEGAL AND SUBJECT TO PROSECUTION.