

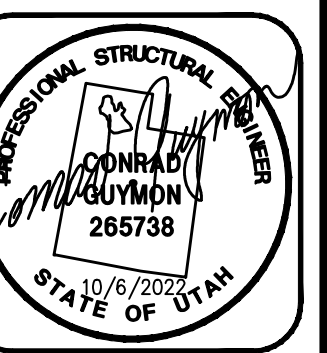
LIGHTING FIXTURE SCHEDULE				
MARK	DESCRIPTION	LAMP TEMP	MANUFACTURER	MODEL
F1	2' X 4' SURFACE MOUNT LED WITH BACKUP BATTERY	3500K	LITHONIA	2TLX4-72L-FW-A19-LP835-ELI4L
F2	2' X 4' SURFACE MOUNT LED	3500K	LITHONIA	2TLX4-72L-FW-A19-LP835

- LEGEND
- 1' X 4' FLUORESCENT LIGHT
  - (2) 2' X 4' FLUORESCENT LIGHTS
  - 2' X 4' FLUORESCENT LIGHT
  - PENDANT LIGHT
  - SURFACE MOUNTED FLUORESCENT FIXTURE
  - SURFACE MOUNTED LIGHT FIXTURE  
DO NOT REINSTALL. INSTALL COVER PLATE ON EXISTING BOX AND PATCH MOUNTING HOLES
  - RECESSED DIRECTIONAL LIGHT FIXTURE
  - RECESSED LIGHT FIXTURE
  - RECESSED LIGHT FIXTURE
  - SPEAKER
  - HVAC DIFFUSER

REFLECTED CEILING PLAN 1 — 1/8"=1'-0"  
PLAN

DRAWING	ISSUE	DATE	BY
1	ADDENDUM 1	10/17/22	CG
2			
3			
4			

PROJECT ARCHITECT	
PROJECT ENGINEER	CG
DRAWN BY	JR
DATE	10/6/2022



1295 NORTH STATE STREET  
OREM, UTAH 84057  
PHONE: (801) 222-0922  
FAX: (801) 222-0902

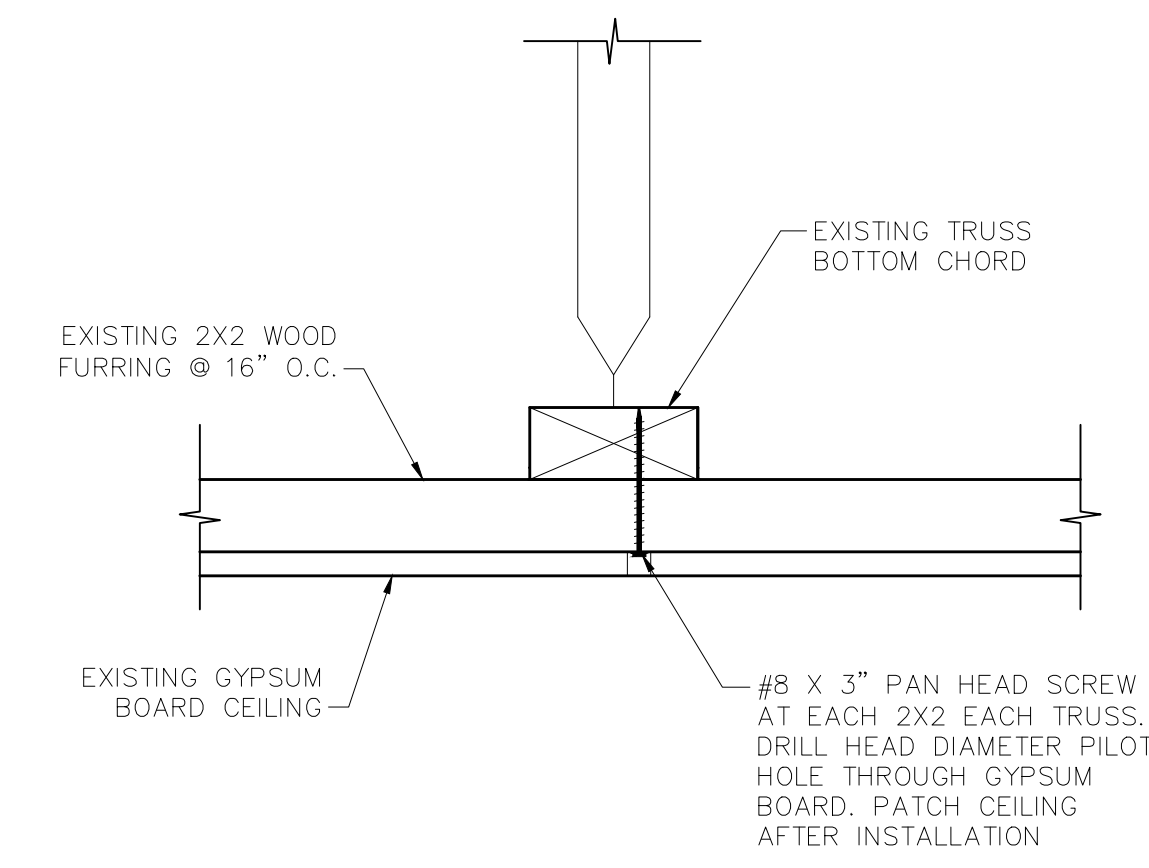
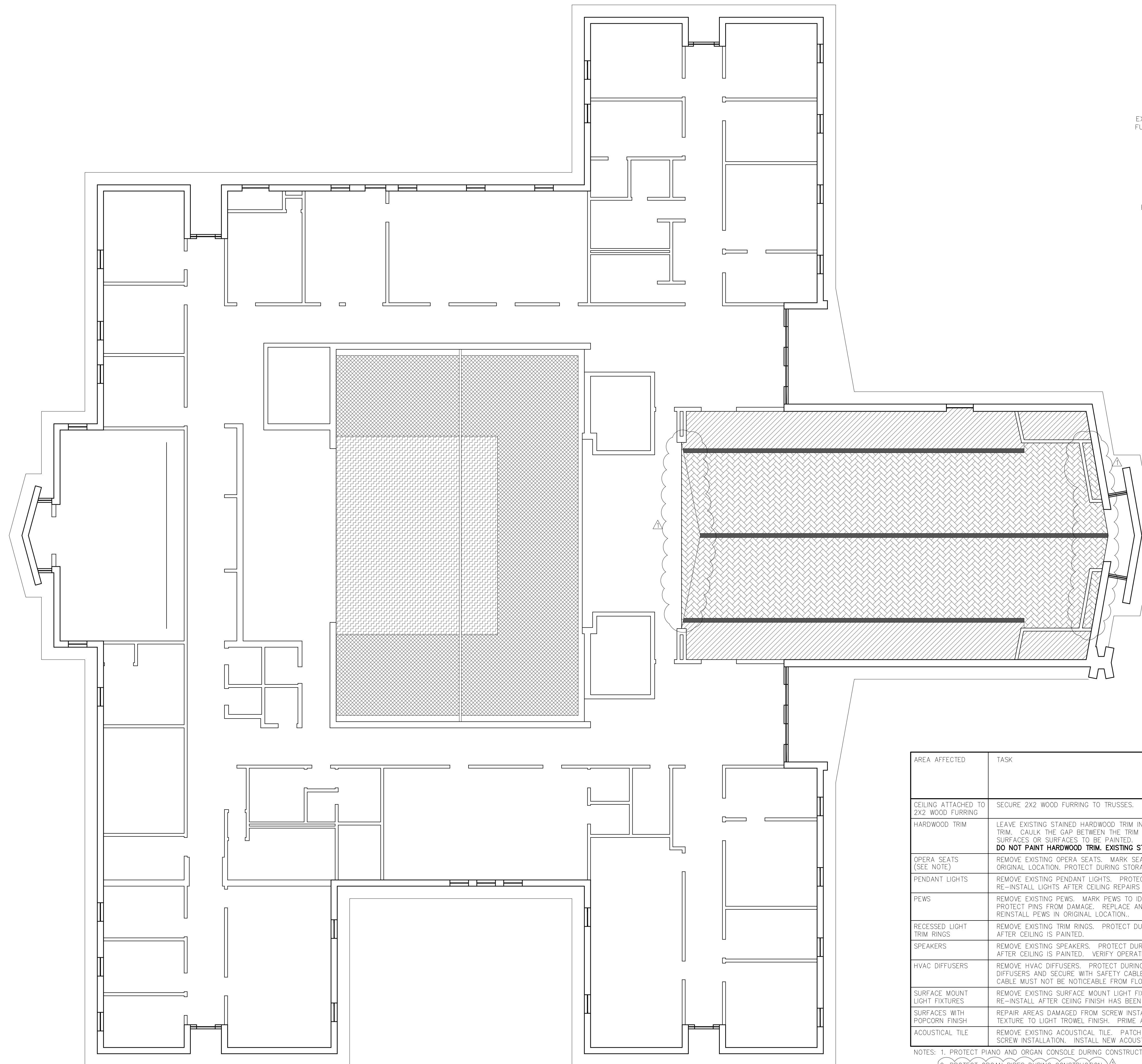


PROJECT PIONEER 1, 4, PROVO YSA 217 516-4370  
376 NORTH 700 WEST  
PROVO, UTAH

SHEET TITLE REFLECTED CEILING PLAN

PROJECT NO. 22347  
DRAWING NO.

S1.1



DETAIL ② — 3"=1'-0"  
DET4

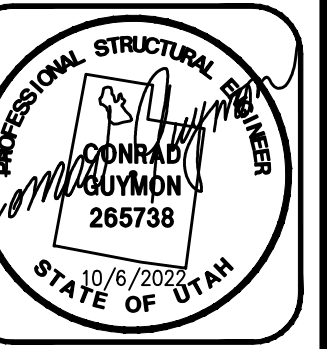
REFLECTED CEILING PLAN ① — 1/8"=1'-0"  
PLAN

AREA AFFECTED	TASK	VERTICAL AND NEAR VERTICAL SURFACES	TILED AREAS	EXPOSED PAINT WITH RECESSED FIXTURES	EXPOSED PAINT WITH PENDANT FIXTURES	EXPOSED PAINT WITH SURFACE MOUNT FIXTURES
CEILING ATTACHED TO 2X2 WOOD FURRING	SECURE 2X2 WOOD FURRING TO TRUSSES. SEE DETAIL 2/S1.2		X		X	X
HARDWOOD TRIM	LEAVE EXISTING STAINED HARDWOOD TRIM IN PLACE. REPAIR ANY DAMAGED TRIM. CAULK THE GAP BETWEEN THE TRIM AND ADJACENT PAINTED SURFACES OR SURFACES TO BE PAINTED. <b>DO NOT PAINT HARDWOOD TRIM. EXISTING STAINED FINISH IS TO REMAIN.</b>	X	X	X	X	
OPERA SEATS (SEE NOTE)	REMOVE EXISTING OPERA SEATS. MARK SEATS TO IDENTIFY THE ORIGINAL LOCATION. PROTECT DURING STORAGE. REINSTALL IN ORIGINAL LOCATION.				X	
PENDANT LIGHTS	REMOVE EXISTING PENDANT LIGHTS. PROTECT DURING STORAGE. RE-INSTALL LIGHTS AFTER CEILING REPAIRS ARE COMPLETE.				X	
PEWS	REMOVE EXISTING PEWS. MARK PEWS TO IDENTIFY THE ORIGINAL LOCATION. PROTECT PINS FROM DAMAGE. REPLACE ANY DAMAGED PINS AS REQUIRED. REINSTALL PEWS IN ORIGINAL LOCATION.			X	X	
RECESSED LIGHT TRIM RINGS	REMOVE EXISTING TRIM RINGS. PROTECT DURING STORAGE. RE-INSTALL AFTER CEILING IS PAINTED.			X	X	X
SPEAKERS	REMOVE EXISTING SPEAKERS. PROTECT DURING STORAGE. RE-INSTALL AFTER CEILING IS PAINTED. VERIFY OPERATION OF THE SOUND SYSTEM.		X	X	X	X
HVAC DIFFUSERS	REMOVE HVAC DIFFUSERS. PROTECT DURING STORAGE. RE-INSTALL DIFFUSERS AND SECURE WITH SAFETY CABLE TO INSIDE OF DUCT. SAFETY CABLE MUST NOT BE NOTICEABLE FROM FLOOR LEVEL.	X		X		
SURFACE MOUNT LIGHT FIXTURES	REMOVE EXISTING SURFACE MOUNT LIGHT FIXTURES. PROTECT DURING STORAGE. RE-INSTALL AFTER CEILING FINISH HAS BEEN RESTORED.		X	X		X
SURFACES WITH POPCORN FINISH	REPAIR AREAS DAMAGED FROM SCREW INSTALLATION AND ASBESTOS ABATEMENT. TEXTURE TO LIGHT TROWEL FINISH. PRIME AND PAINT.	X		X	X	
ACOUSTICAL TILE	REMOVE EXISTING ACOUSTICAL TILE. PATCH AREAS DAMAGED FROM SCREW INSTALLATION. INSTALL NEW ACOUSTICAL TILE.		X			

NOTES: 1. PROTECT PIANO AND ORGAN CONSOLE DURING CONSTRUCTION.  
2. PROTECT ORGAN PIPES DURING CONSTRUCTION

DRAWING	ISSUE	DATE	BY
1	ADDENDUM 1	10/17/22	CG
2			
3			
4			

PROJECT ARCHITECT	
PROJECT ENGINEER	CG
DRAWN BY	JR
DATE	10/6/2022



1295 NORTH STATE STREET  
OREM, UTAH 84057  
PHONE: (801) 222-0922  
FAX: (801) 222-0902



PROJECT PIONEER 1, 4, PROVO YSA 217 516-4370  
376 NORTH 700 WEST  
PROVO, UTAH

SHEET TITLE REFLECTED CEILING PLAN

PROJECT NO. 22347  
DRAWING NO.

S1.2

COPYRIGHT © CKR ENGINEERS, SALT LAKE CITY, UTAH. ALL RIGHTS RESERVED. UNAUTHORIZED COPYING AND/OR USE IS ILLEGAL AND SUBJECT TO PROSECUTION.