

# PARK 1, 4, 10 PHASE II OREM UT PARK STAKE PARKING AND DRAINAGE UPGRADE

50 SOUTH 750 WEST  
OREM, UTAH 84058  
PROPERTY # 505069319020101

AUGUST 2020



**PARK 1, 4, 10 - PHASE 2**  
**The Church of Jesus Christ of Latter-Day Saints**  
**OREM UT PARK STAKE**  
50 SOUTH 750 WEST  
OREM, UT 84058

REVISIONS	
REV	DESCRIPTION

PROJECT NO: 18107.A  
DRAWN BY: MGS  
CHECKED BY: RJP/CEG  
DATE: AUGUST 2020  
PROP NO: 505069319020101

COVER SHEET

**G1.00**

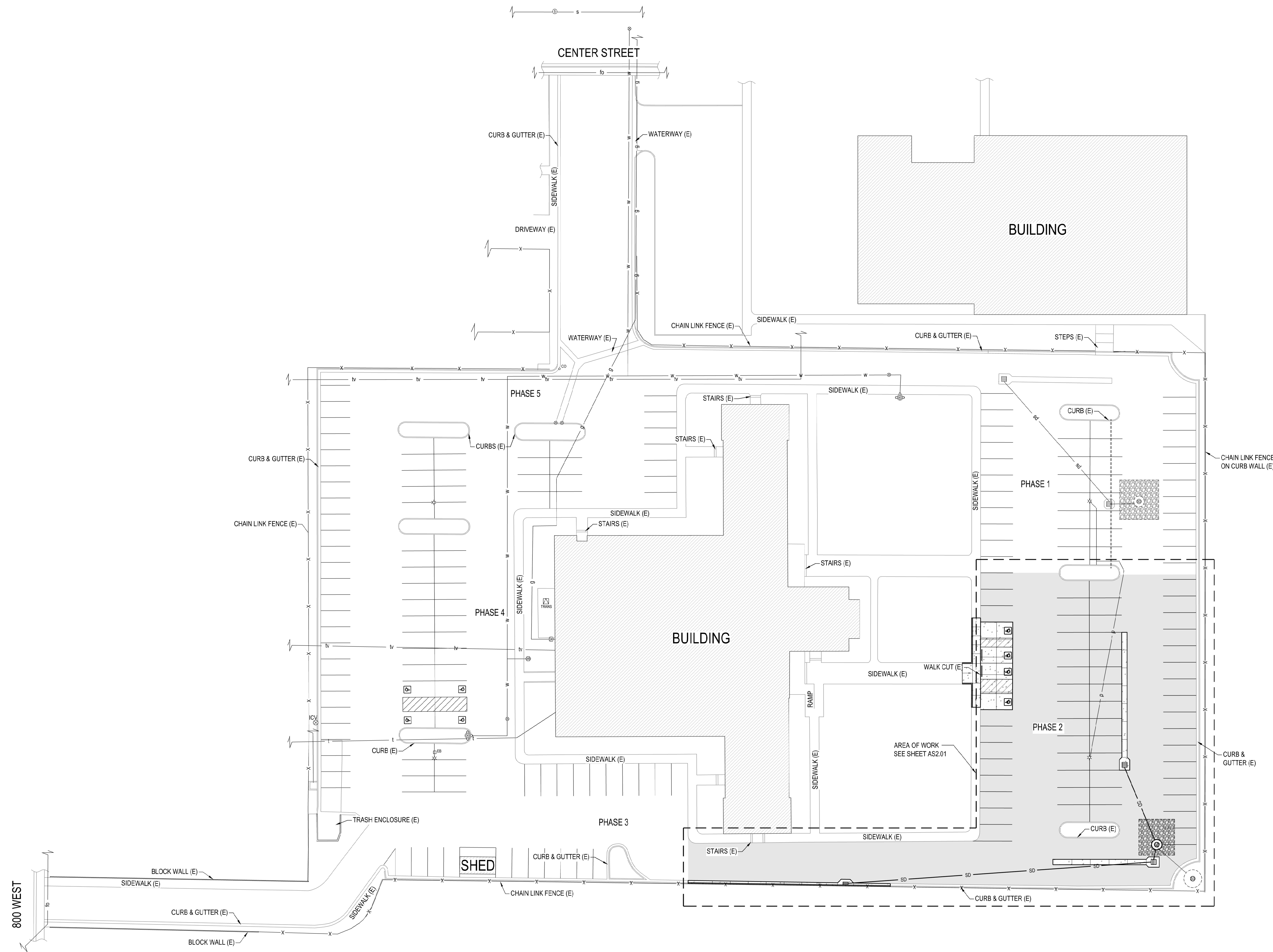
S:\2018\18107\18107A\Consulting\Prod\_Dwg\18107A-Struct.dwg, 2020 - 6:56pm



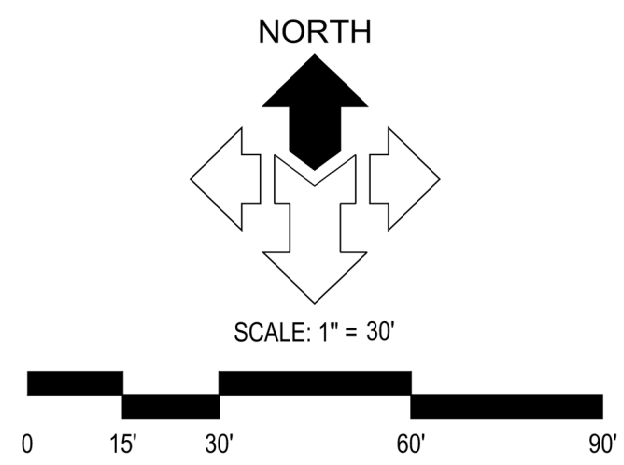




S:\2018\18107\18107A\Consulting\Prod\_Dwg\18107A-Site.dwg, Mels Aug. 27, 2020 - 6:22pm



**SITE PLAN**  
SCALE: 1" = 30'-0"



**McNEIL ENGINEERING**  
Economic and Sustainable Designs, Professionals You Know and Trust  
8610 South Sandy Parkway, Suite 200 Sandy, Utah 84070 801.255.7700 mcneilengineering.com  
Civil Engineering • Consulting & Landscape Architecture  
Structural Engineering • Land Surveying & HDS

**PARK 1, 4, 10 - PHASE 2**  
**The Church of Jesus Christ of Latter-Day Saints**  
**OREM UT PARK STAKE**  
50 SOUTH 750 WEST  
OREM, UT 84058

REV	DATE	DESCRIPTION

PROJECT NO: 18107.A  
DRAWN BY: MGS  
CHECKED BY: RJP/CEG  
DATE: AUGUST 2020  
PROP NO: 505069319020101

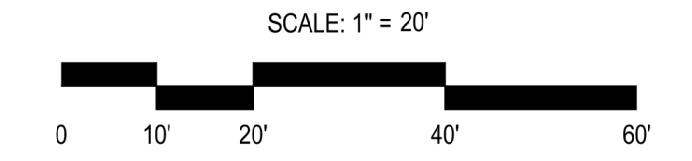
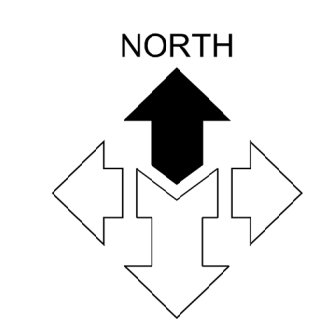
**Blue Stakes of UTAH811**  
Bluestakes.org

**NOTICE!**  
THE CONTRACTOR SHALL BE RESPONSIBLE FOR THE LOCATION, PROTECTION AND RESTORATION OF ALL BURIED OR ABOVE GROUND UTILITIES SHOWN OR NOT SHOWN ON THE PLANS.

**SITE PLAN**  
**C1.01**



**DEMOLITION PLAN**  
SCALE: 1" = 20'-0"



- SCOPE OF WORK:**  
PROVIDE, INSTALL AND/OR CONSTRUCT THE FOLLOWING PER THE SPECIFICATIONS GIVEN OR REFERENCED AND THE DETAILS NOTED AND AS SHOWN ON THE CONSTRUCTION DRAWINGS:
- ① SAWCUT EXISTING ASPHALT PAVEMENT. REMOVE ASPHALT PAVEMENT AND ROAD BASE DOWN 9" BELOW FINISH GRADE AND PROPERLY DISPOSE.
  - ② SAWCUT, REMOVE, AND DISPOSE OF EXISTING CONCRETE CURB AND GUTTER FROM JOINT TO JOINT.
  - ③ REMOVE AND DISPOSE OF EXISTING CATCH BASIN. LEAVE EXISTING 6" STORM DRAIN LINE IN PLACE.
  - ④ SAWCUT, REMOVE, AND DISPOSE OF EXISTING CONCRETE SIDEWALK AND ACCESSIBLE RAMP.
  - ⑤ PROOF ROLL EXPOSED SUB-GRADE. IF ANY SOFT SPOTS DISCOVERED NOTIFY CONSULTANT AND OWNER. SCARIFY PER GENERAL NOTES. PROVIDE IN BASE BID \$9,000.00 TO OVEREXCAVATE SOFT SUBGRADE APPROX. (12" DEEP). INSTALL STABILIZATION FABRIC (MIRAFI 16GN) AND FILL WITH PIT-RUN MATERIAL. COORDINATE ALL WORK WITH CONSULTANT.

**McNEIL ENGINEERING**  
Economic and Sustainable Designs, Professionals You Know and Trust  
8610 South Sandy Parkway, Suite 200, Sandy, Utah 84070 801.255.7700 mcneilengineering.com  
Civil Engineering • Consulting & Landscape Architecture  
Structural Engineering • Land Surveying & HDS

**PARK 1, 4, 10 - PHASE 2**  
**The Church of Jesus Christ of Latter-Day Saints**  
**OREM UT PARK STAKE**  
50 SOUTH 750 WEST  
OREM, UT 84058

REV	DATE	DESCRIPTION

PROJECT NO: 18107.A  
DRAWN BY: MGS  
CHECKED BY: RJP/CEG  
DATE: AUGUST 2020  
PROP NO: 505069319020101

**DEMOLITION PLAN**

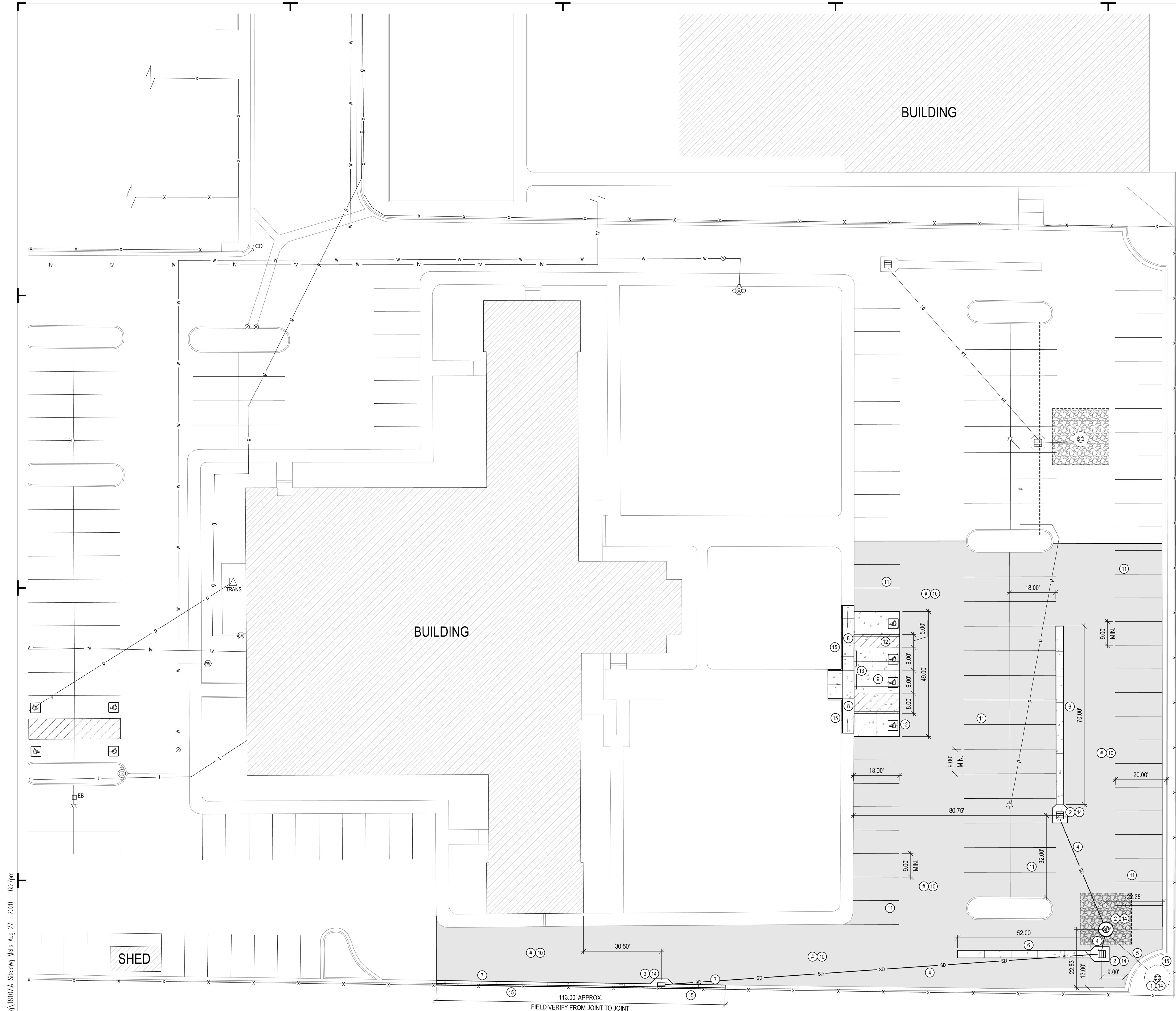
**C2.01**



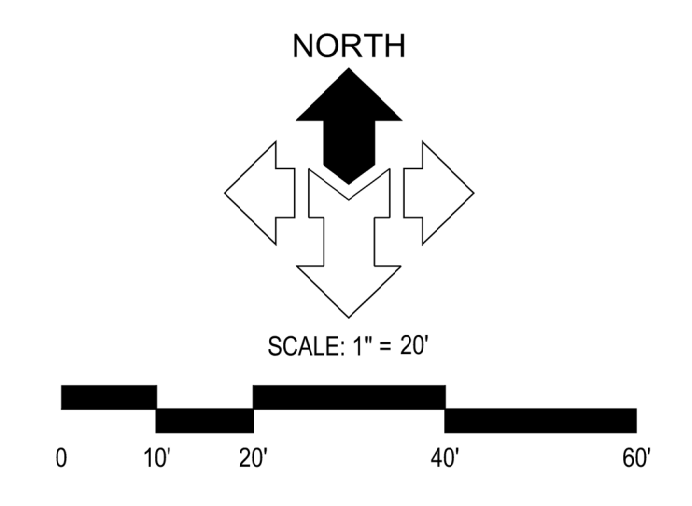
**NOTICE!**  
THE CONTRACTOR SHALL BE RESPONSIBLE FOR THE LOCATION, PROTECTION AND RESTORATION OF ALL BURIED OR ABOVE GROUND UTILITIES. SHOWN OR NOT SHOWN ON THE PLANS.

S:\2018\18107\18107A\Consulting\Prod Draw\18107A-Struct.dwg, Mels Aug 27, 2020 - 6:50pm





**HORIZONTAL CONTROL PLAN**  
SCALE: 1" = 20'-0"



**SCOPE OF WORK:**  
PROVIDE, INSTALL AND/OR CONSTRUCT THE FOLLOWING PER THE SPECIFICATIONS GIVEN OR REFERENCED AND THE DETAILS NOTED AND AS SHOWN ON THE CONSTRUCTION DRAWINGS:

- ① DIG DOWN TO LOCATE EXISTING SUMP IN LANDSCAPE AREA APPROX. 2'-0" AS INDICATED ON RECORD DRAWINGS. INSTALL GRADE RINGS AS REQUIRED TO INSTALL NEW SOLID MANHOLE LID TO NATURAL GRADE ELEVATION.
- ② INSTALL (2) NEW 4' x 4' x 8' STORM DRAIN CATCH BASINS AND NEW SLOTTED HEAVY DUTY BICYCLE SAFE METAL GRATE WITH NEW (2) 6'-0" DIA. x 3'-0" TALL, PRE-CAST CONCRETE DRYWELL RINGS AND SOLID LID WITH 18" CONCRETE APRON. PER DETAIL 'OREM CITY DETAIL SD-3', SHEET C5.02 AND CALCS. FOR AREA OF 2" CLEAN WASHED STONE, SHEET C4.01. COMPACT AND CONTINUE TO FILL REMAINING EXCAVATED AREA WITH CLEAN, 2" CLEAN WASHED STONE UNTIL LEVEL WITH TOP OF DRYWELL COVER INCLUDING FILTER FABRIC. INSTALL NEW CONCRETE WATERWAY OVER NEW STORM DRAIN CATCH BASINS. SEE DETAILS '1&3', SHEET C5.01.
- ③ INSTALL NEW PRECAST STORM DRAIN CATCH BASIN WITH HEAVY DUTY METAL, BICYCLE SAFE GRATE WITHIN NEW CURB AND GUTTER. SEE DETAIL '7', SHEET C5.01 AND 'OREM CITY DETAIL SD-4', SHEET C5.02.
- ④ CONNECT NEW STORM DRAIN CATCH BASINS WITH NEW 8" DIAMETER HDPE STORM DRAIN LINE. GROUT AND SEAL CONNECTIONS WATER-TIGHT.
- ⑤ CONNECT EXISTING 6" STORM DRAIN LINE INTO NEW SUMP. GROUT AND SEAL.
- ⑥ INSTALL 3'-0" WIDE CONCRETE WATERWAY. SEE DETAIL '2', SHEET C5.01.
- ⑦ INSTALL NEW 30" CONCRETE CATCH CURB AND GUTTER. SEE DETAIL '4', SHEET C5.01.
- ⑧ INSTALL ACCESSIBLE RAMP. SEE DETAILS '9&10', SHEET C5.01.
- ⑨ INSTALL 6" THICK CONCRETE PAD BENEATH ACCESSIBLE PARKING STALL AREA.
- ⑩ GRADE WITH UNIFORM SLOPE PER PLAN AND INSTALL 6" ROAD BASE WITH 3" ASPHALT PAVEMENT.
- ⑪ PAINT 4" WIDE SOLID PARKING STALL STRIPE LINES PER SPECIFICATION.
- ⑫ PAINT ADA ACCESSIBLE PARKING STRIPING. SEE DETAILS '5&6', SHEET C5.01.
- ⑬ INSTALL CONCRETE WHEEL STOP AT ACCESSIBLE RAMP. SEE DETAIL '8', SHEET C5.01.
- ⑭ CLEAN OUT ALL DEBRIS FROM STORM DRAIN CATCH BASINS AND NEW AND EXISTING SUMPS IN AREA OF CONSTRUCTION AT COMPLETION OF PROJECT. CHECK ALL PIPE CONNECTIONS THAT THEY ARE SEALED WATERTIGHT. SEAL AS REQUIRED.
- ⑮ REMOVE DEBRIS AND CONCRETE FROM LANDSCAPING IN AREAS OF CONSTRUCTION. RESTORE LANDSCAPING TO PRE EXISTING CONDITIONS. INSTALL TOPSOIL AS REQUIRED TO BRING LANDSCAPE AREAS TO NATURAL GRADE. GRADE WITH UNIFORM SLOPE AND INSTALL SOD IN FULL STRIPS NOT PIECES.

**McNEIL ENGINEERING**  
Economic and Sustainable Designs, Professionals You Know and Trust  
8410 South Sandy Parkway, Suite 200 Sandy, Utah 84070 801.255.7700 mcneilengineering.com

**Civil Engineering • Consulting & Landscape Architecture**  
**Structural Engineering • Land Surveying & HDS**

**PARK 1, 4, 10 - PHASE 2**  
**The Church of Jesus Christ of Latter-Day Saints**  
**OREM UT PARK STAKE**  
50 SOUTH 750 WEST  
OREM, UT 84058

REV	DATE	DESCRIPTION

PROJECT NO: 18107.A  
DRAWN BY: MGS  
CHECKED BY: RJP/CEG  
DATE: AUGUST 2020  
PROP NO: 505069319020101

**HORIZONTAL CONTROL PLAN**

**C3.01**

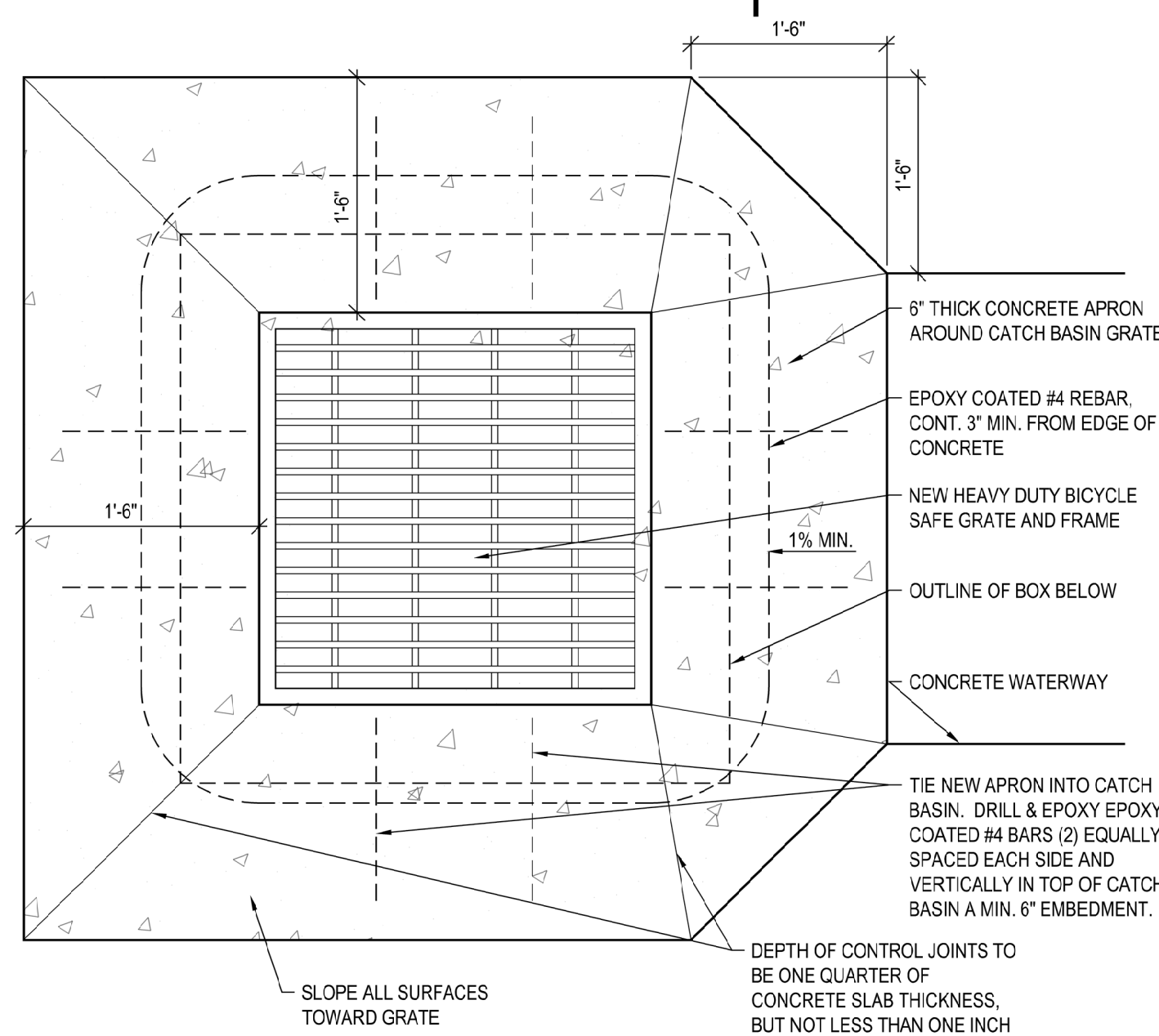
**NOTICE!**  
THE CONTRACTOR SHALL BE RESPONSIBLE FOR THE LOCATION, PROTECTION AND RESTORATION OF ALL BURIED OR ABOVE GROUND UTILITIES. SHOWN OR NOT SHOWN ON THE PLANS.

S:\2018\18107\18107.A\Consulting Prod Dwg\18107A-Struct.dwg, Mels Aug 27, 2020 - 6:27pm

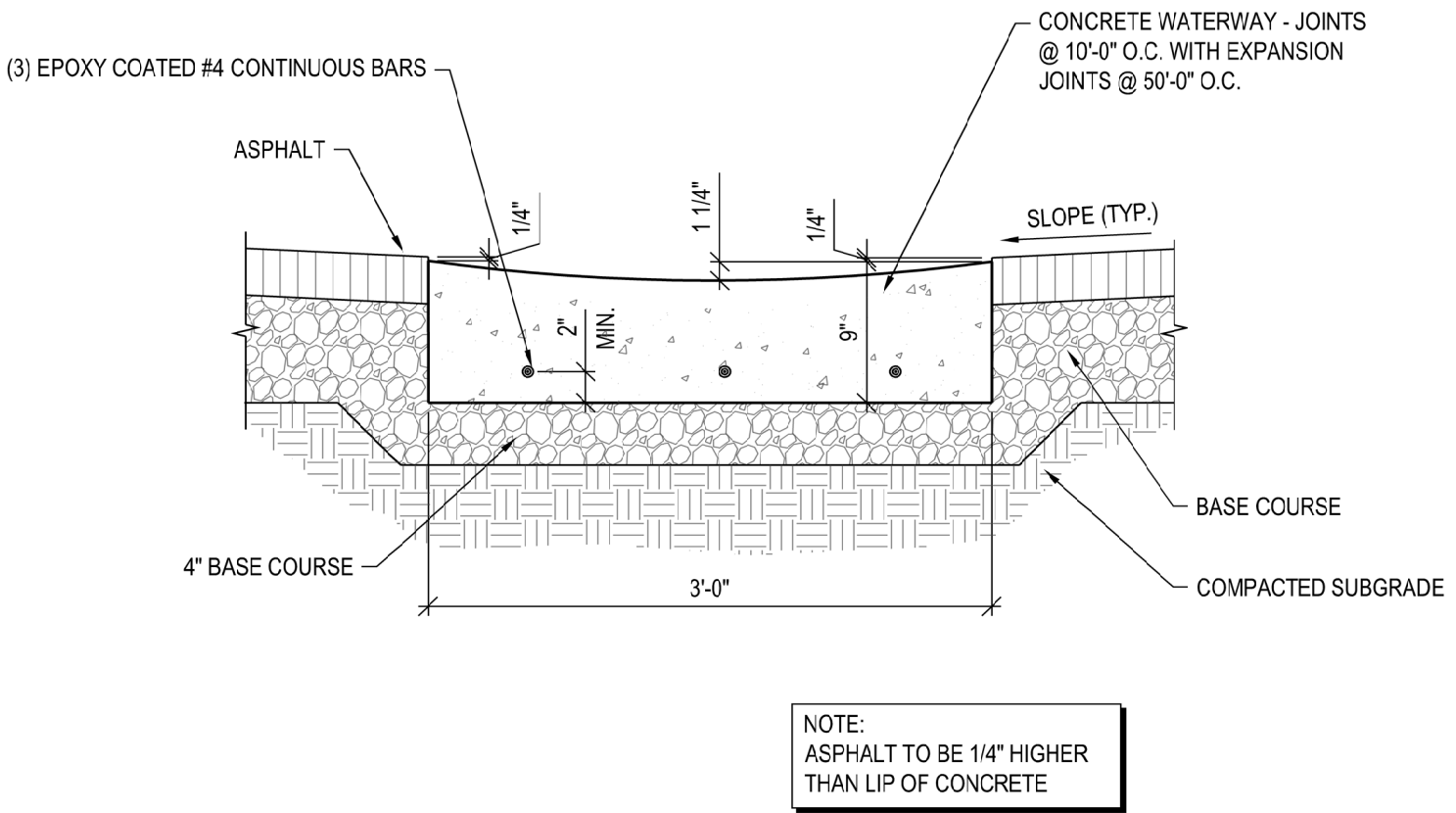




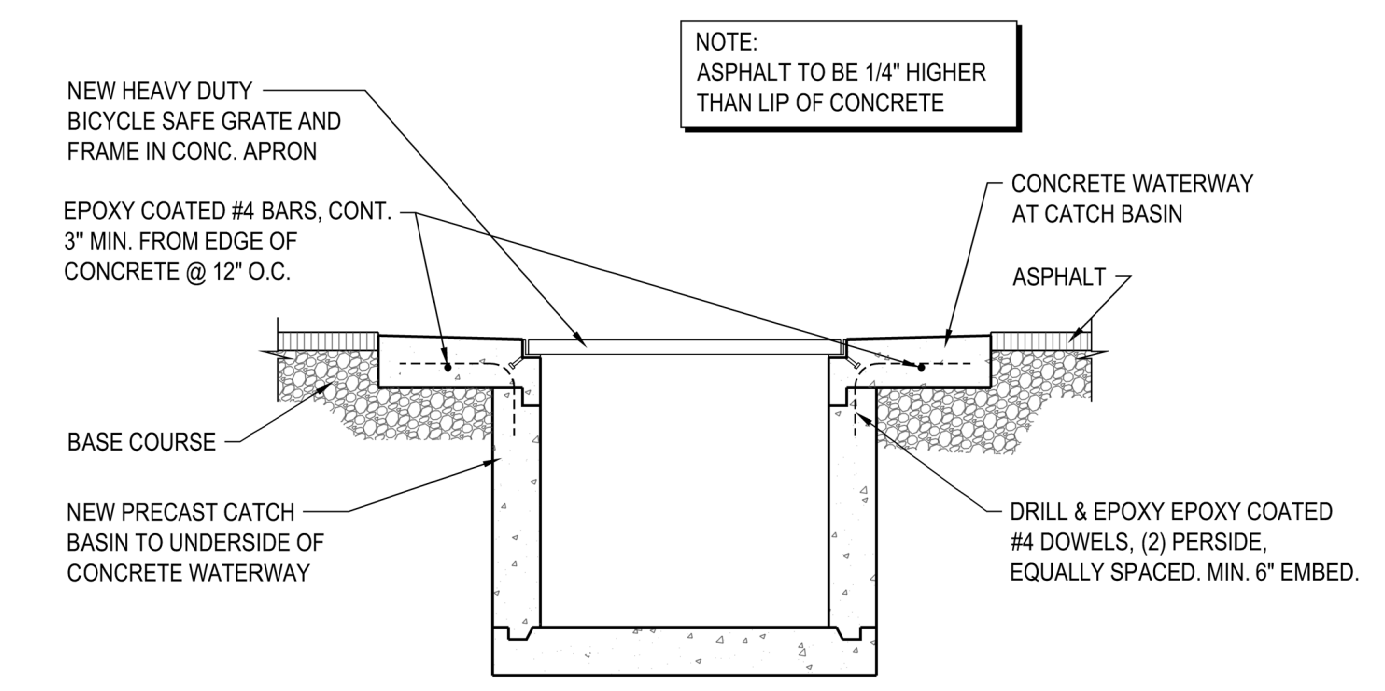




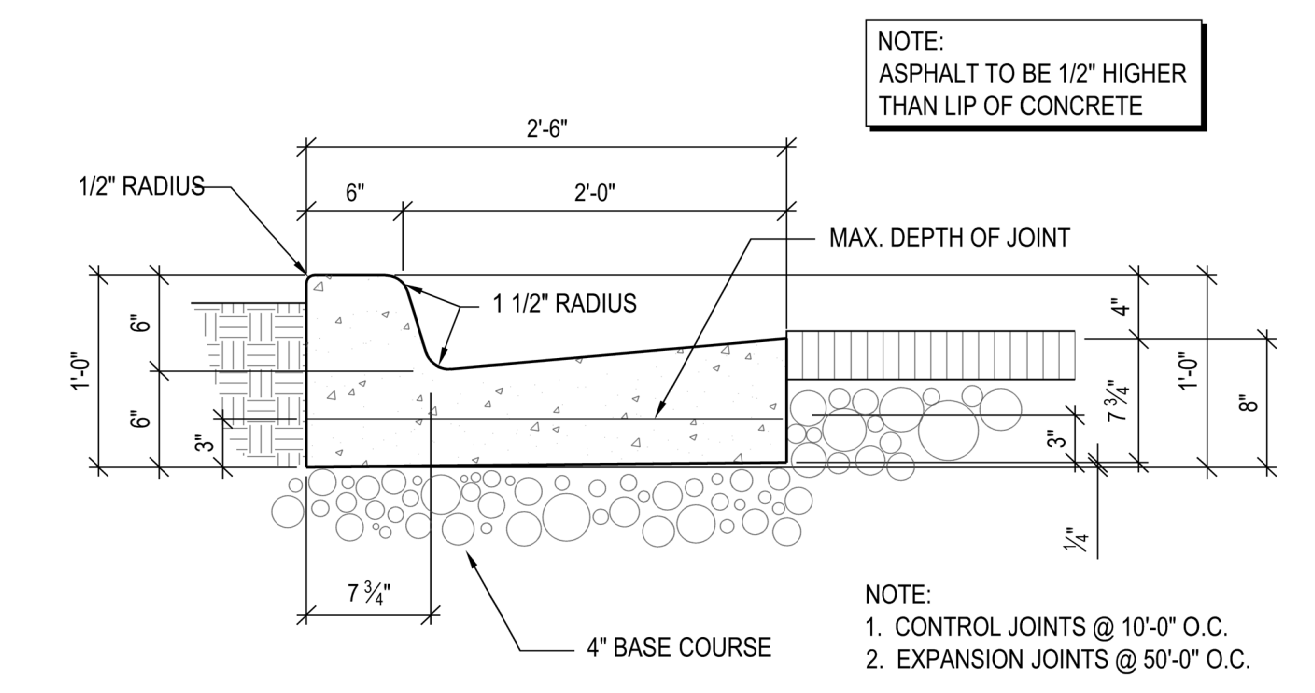
**1 CATCH BASIN APRON WATERWAY END**  
SCALE: N.T.S.



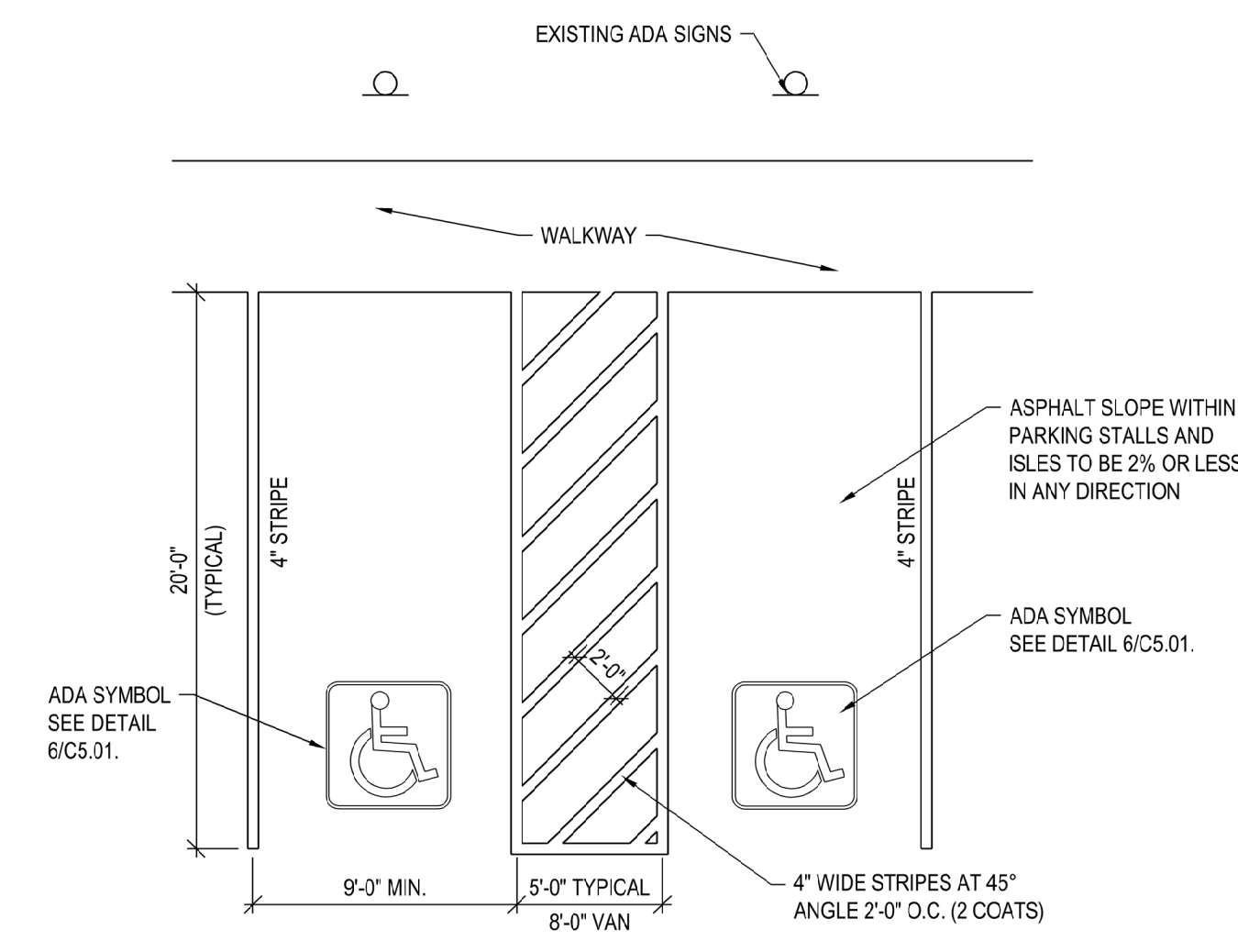
**2 CONCRETE WATERWAY**  
SCALE: N.T.S.



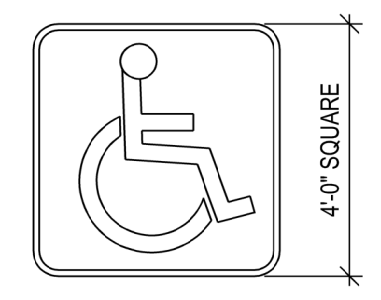
**3 CATCH BASIN DETAIL**  
SCALE: N.T.S.



**4 CURB AND GUTTER**  
SCALE: N.T.S.

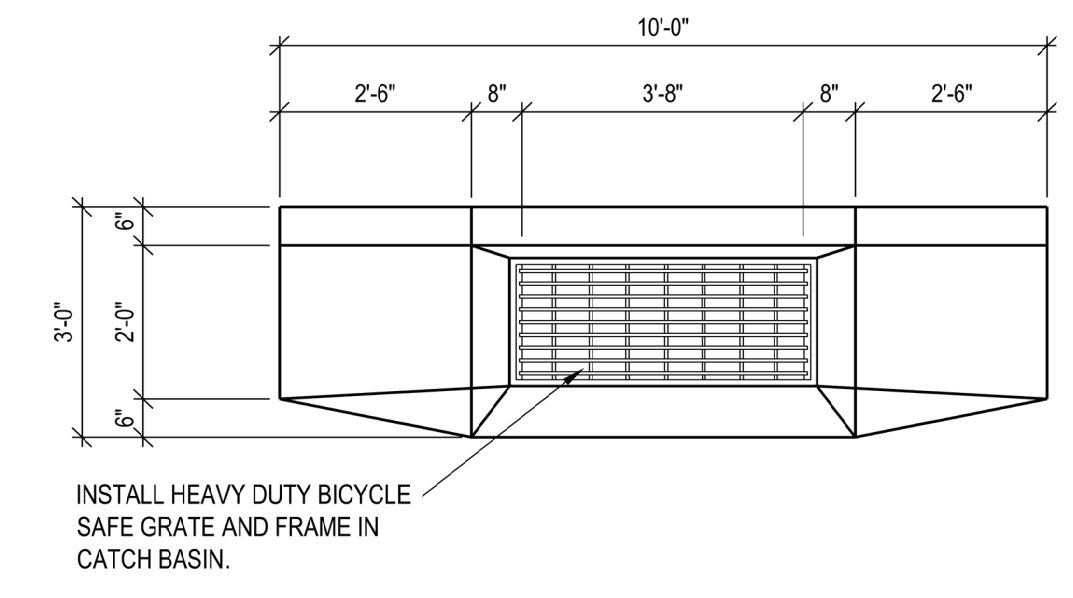


**5 ADA PARKING DETAIL**  
SCALE: N.T.S.

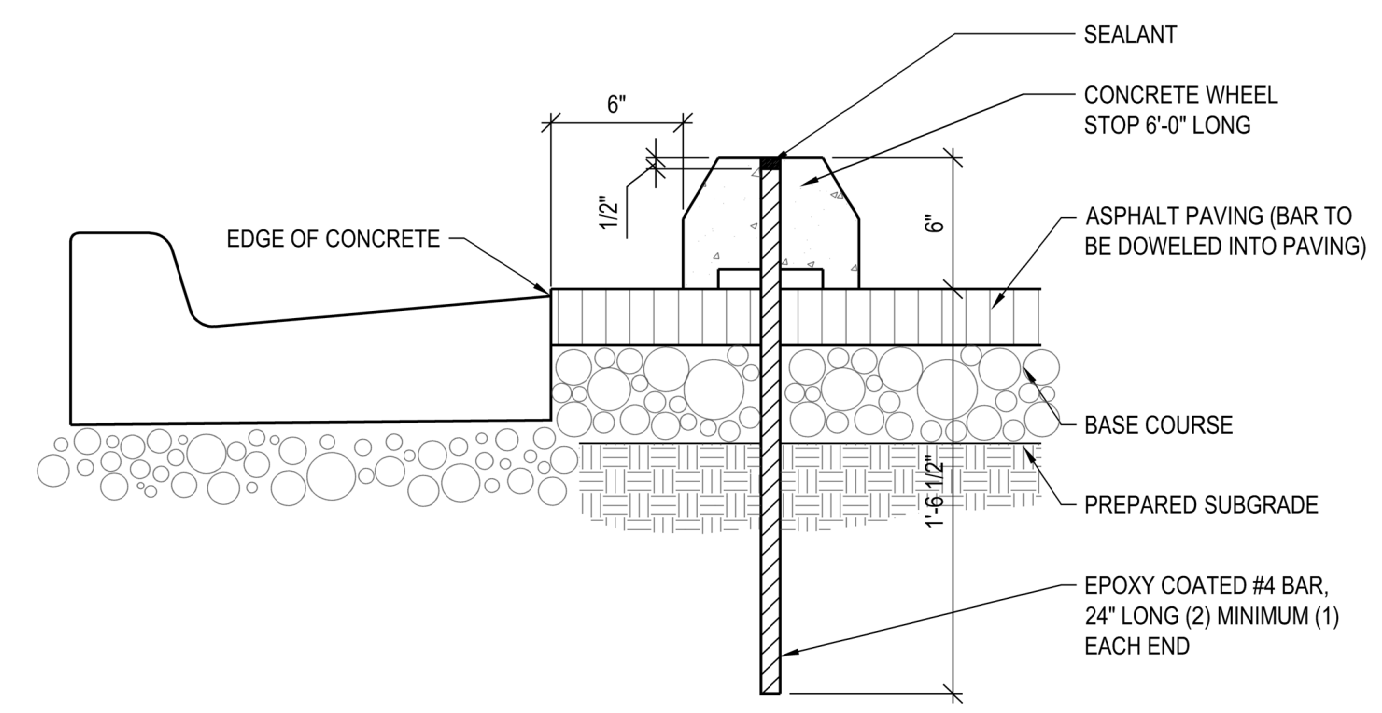


**6 ADA STRIPING SYMBOL**  
SCALE: N.T.S.

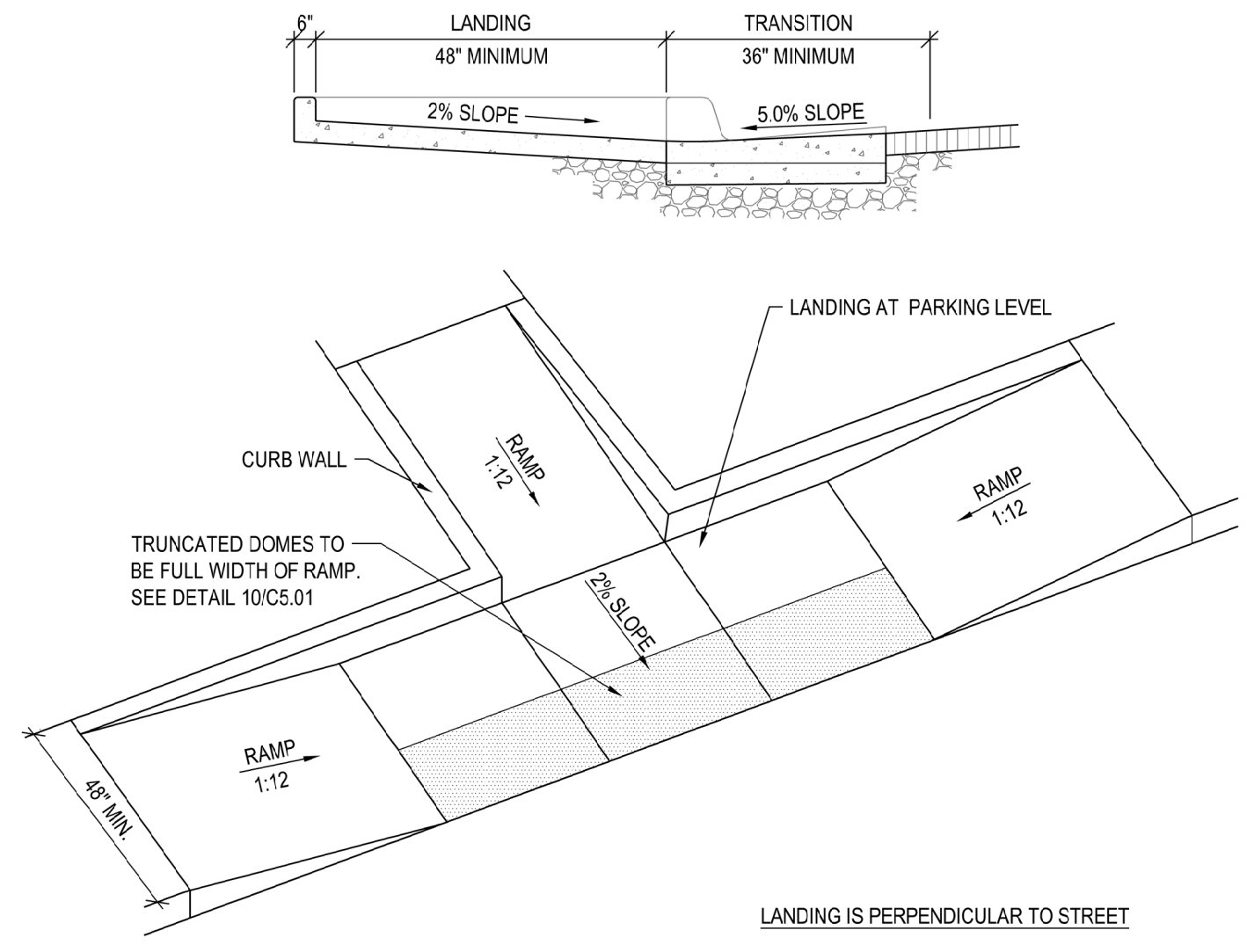
PAINTED EMBLEM ON ASPHALT PAVING TYP. AT ALL ADA PARKING STALLS PER CITY REQUIREMENTS. (2 COATS)  
NOTE: SEE SPECIFICATION FOR PAINT TYPE AND COLOR. (2 COATS)



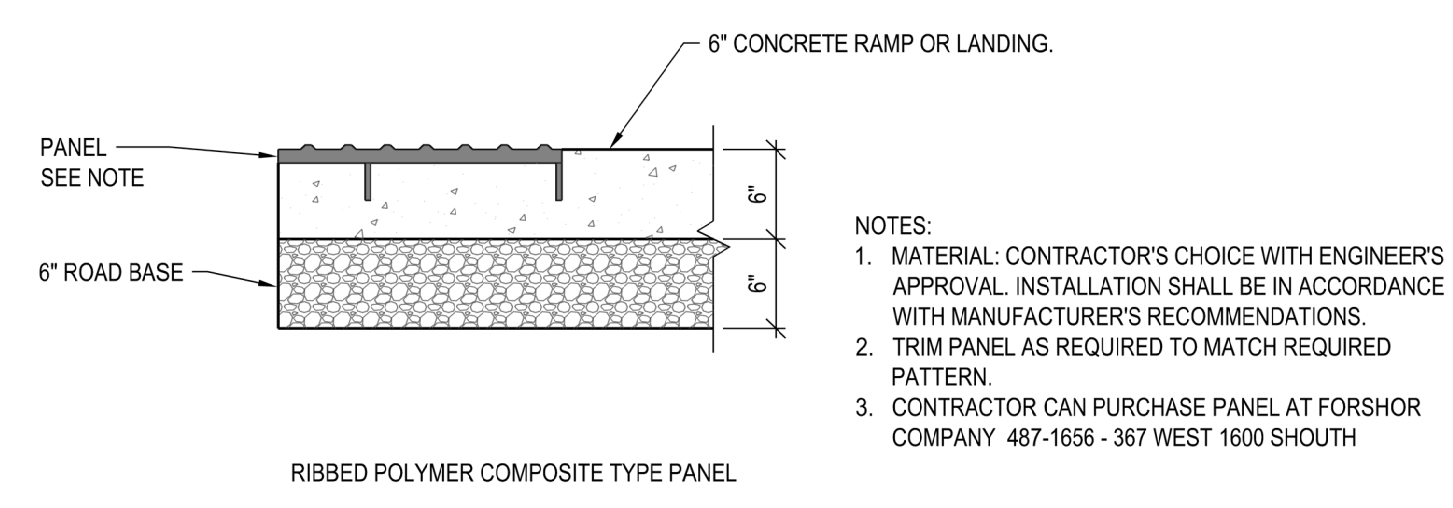
**7 CURB INLET PLAN**  
SCALE: N.T.S.



**8 CONCRETE WHEEL STOP**  
SCALE: N.T.S.



**9 ADA ACCESSIBLE RAMP**  
SCALE: N.T.S.



**10 ADA PATTERNING DETAIL**  
SCALE: N.T.S.

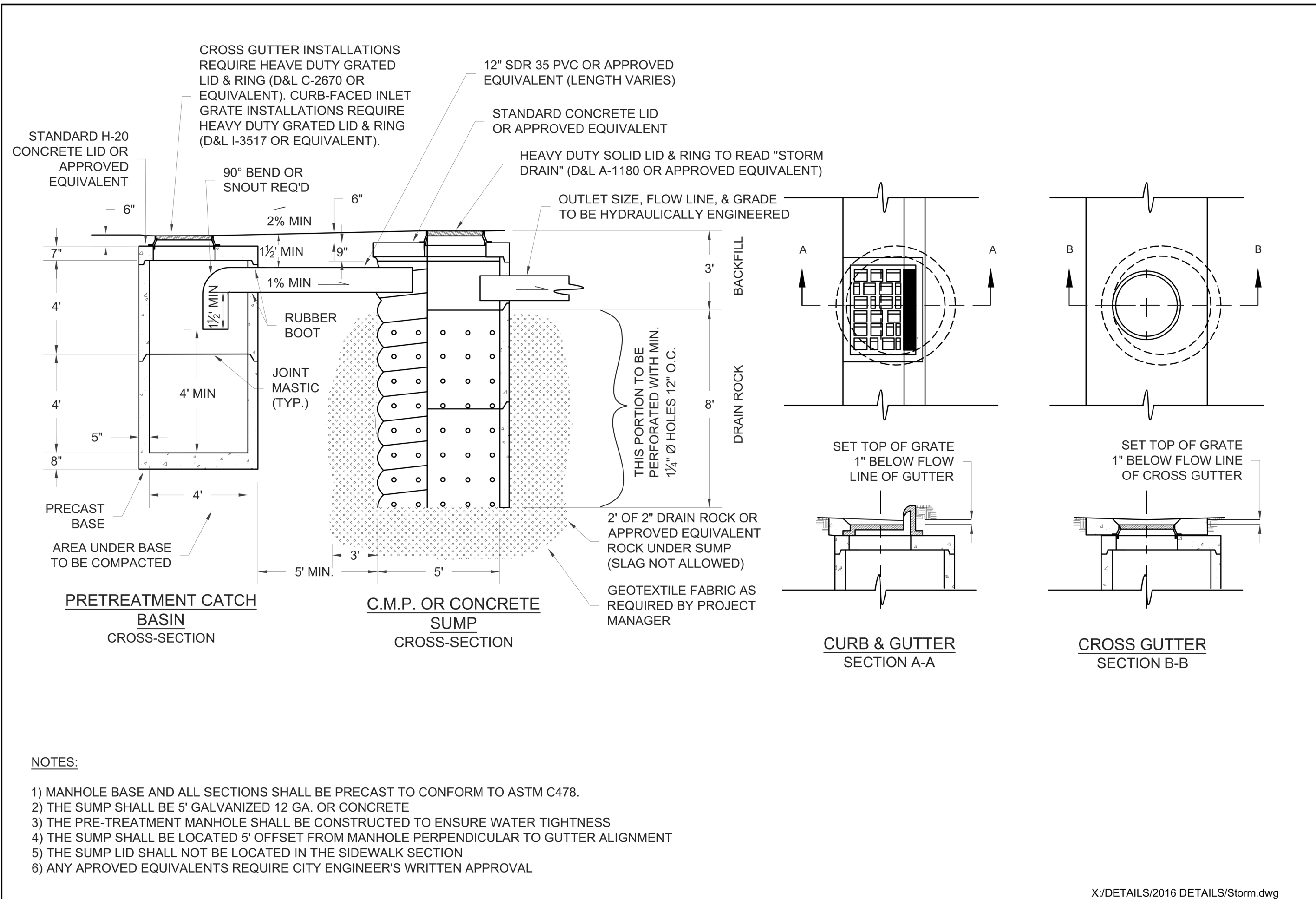
REV	DATE	DESCRIPTION

PROJECT NO:	18107.A
DRAWN BY:	IMGs
CHECKED BY:	RJP/CEG
DATE:	AUGUST 2020
PROP NO:	505069319020101

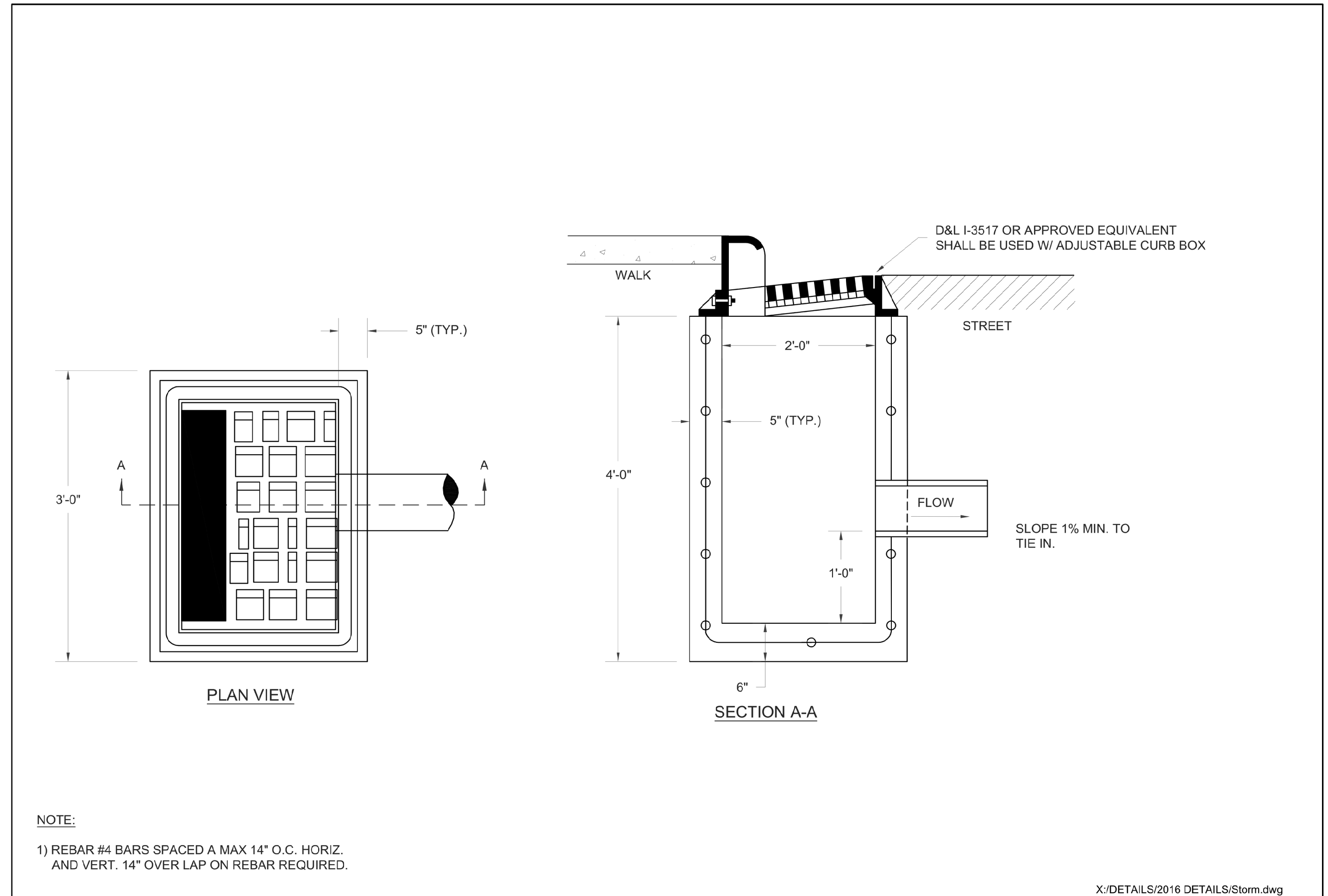
DETAIL SHEET

**C5.01**





	CONSTRUCTION STANDARDS AND SPECIFICATIONS	CITY OF OREM	PRE-TREATMENT CATCH BASIN & SUMP	REV. 8/2016
				SD-3



	CONSTRUCTION STANDARDS AND SPECIFICATIONS	CITY OF OREM	STANDARD CATCH BASIN	REV. 1/2016
				SD-4

**McNEIL ENGINEERING**  
 Economic and Sustainable Designs, Professionals You Know and Trust  
 8610 South Sandy Parkway, Suite 200 Sandy, Utah 84070 801.255.7700 mcnengineering.com  
 Civil Engineering • Consulting & Landscape Architecture  
 Structural Engineering • Land Surveying & HDS

**PARK 1, 4, 10 - PHASE 2**  
**The Church of Jesus Christ of Latter-Day Saints**  
**OREM UT PARK STAKE**  
**50 SOUTH 750 WEST**  
**OREM, UT 84058**

REV	DATE	DESCRIPTION

PROJECT NO: 18107.A  
 DRAWN BY: MGS  
 CHECKED BY: RJP/CEG  
 DATE: AUGUST 2020  
 PROP NO: 505069319020101

S:\2018Files\18107A\18107A\Consulting\Prod Draw\18107A-Site.dwg Mgs Aug 27, 2020 - 6:20pm