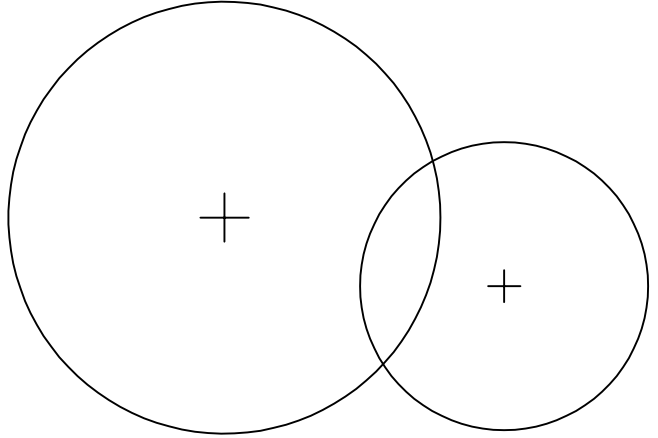
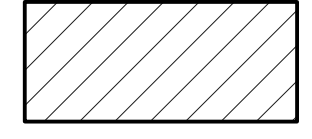
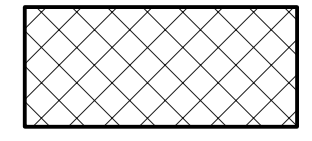
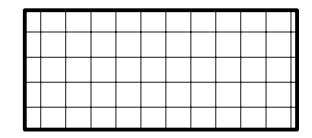
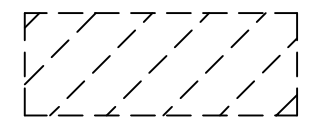
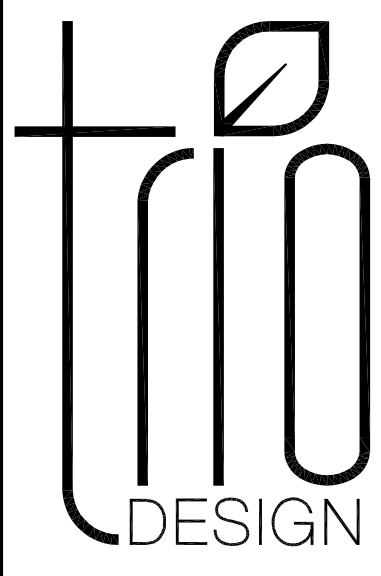
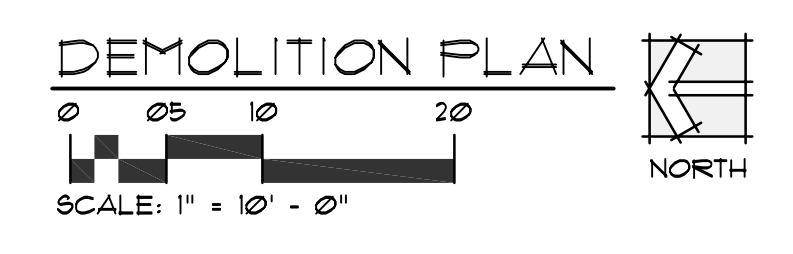


DEMOLITION LEGEND

-  EXISTING TREES TO REMAIN, SAFEGUARD DURING NEW CONSTRUCTION.
-  REMOVE EXISTING ASPHALT AND ROAD BASE TO A DEPTH OF 12" IN HATCHED AREA.
-  EXISTING SHRUBS, WEED BARRIER FABRIC AND BARK MULCH TO BE REMOVED COMPLETELY.
-  EXISTING SOD AND TOPSOIL TO BE REMOVED TO A DEPTH OF 4" TO ACCOMMODATE NEW BARK MULCH. APPLY AN HERBICIDE TO SOD PRIOR TO REMOVAL.
-  REMOVE EXISTING PARKING STRIPES (DASHED LINES ONLY).

SITE DEMOLITION NOTES

1. EXISTING SIDEWALKS, ASPHALT, CURBS/GUTTERS, UTILITIES, MECHANICAL EQUIPMENT, FENCES, LIGHT POLES, MOW STRIPS, ETC. TO REMAIN, UNLESS OTHERWISE INDICATED, SAFEGUARD DURING NEW CONSTRUCTION.
2. EXISTING SOD TO REMAIN, UNLESS OTHERWISE INDICATE. REPAIR OR REPLACE IF DAMAGED DURING NEW CONSTRUCTION.



4040w daybreak pkwy #110
south Jordan, ut 84009
8 0 1 . 4 1 7 . 9 9 5 1
www.triodesigninc.com



Project Name:

**BUILDING #5
NEW ADA RAMP**
1455 SOUTH 1700 EAST
SALT LAKE CITY, UTAH

Project For:

THE CHURCH OF
JESUS CHRIST
OF LATTER-DAY SAINTS

Revisions:

Date:
JUNE 04, 2019

Plan Series:
-

Property Number:
506-7251

Sheet Title:

**DEMOLITION
PLAN**

Sheet No.:

SD1.1



Project Name:

**BUILDING #5
NEW ADA RAMP**
1455 SOUTH 1700 EAST
SALT LAKE CITY, UTAH

Project For:

THE CHURCH OF
**JESUS CHRIST
OF LATTER-DAY SAINTS**

Revisions:

Date:
JUNE 04, 2019

Plan Series:
-

Property Number:
506-7251

Sheet Title:

**SITE LAYOUT
AND GRADING
PLANS**

Sheet No.:

SD1.2

EXISTING BUILDING
F.F.E. = 100'-0"

EXISTING BUILDING
F.F.E. = 100'-0"

NEW CONCRETE MOW STRIP, MOW STRIP TO BE 18" TALL AT THIS LOCATION, ALIGN WITH EDGE OF NEW RAMP.

NEW SECTION OF CONCRETE CURB AND GUTTER MATCH EXIST. CONDITION.

NEW STRIPING

NEW ASPHALT PATCH

(2) NEW CONCRETE WHEEL STOPS

NEW STRIPING

NEW H.C. PARKING LOGOS (TYP. 4 LOC.)

RELOCATED LIGHT POLE WITH NEW CONC. BASE, SEE E/SD13.

CONTROL JOINTS

NEW H.C. PARKING SIGNS (TYP. 4 LOC.), SEE C/SD13.

DETECTABLE WARNING PAVERS (TYP. 2 LOC.)

1700 EAST

1700 EAST

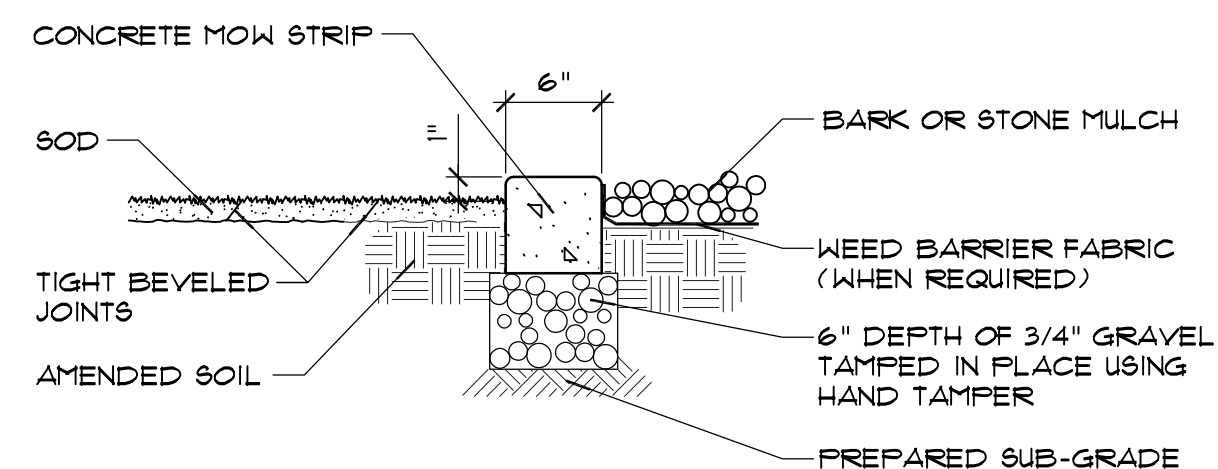
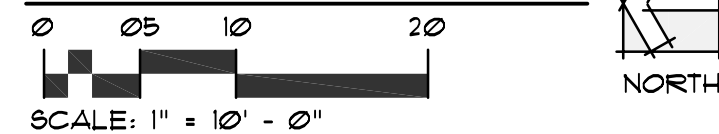
SITE LAYOUT LEGEND

NEW 6"x6"x11'-9" CONCRETE MOWSTRIP, SEE NOTES BELOW.

CONCRETE MOW STRIP NOTES

1. MOW STRIP TO BE CAST-IN-PLACE AND POURED USING TYPICAL WEIGHT STRUCTURAL CONCRETE.
2. CONTRACTOR TO ENSURE POSITIVE DRAINAGE AROUND MOW STRIPS-DO NOT CREATE A DAM EFFECT WITH PLACEMENT OF MOW STRIP.
3. MAXIMUM 1/2" WIDTH VARIATION.
4. PRECISELY FOLLOW LAYOUT AS SHOWN ON MOW STRIP/EDGING DIMENSION PLAN.
5. ALL DIMENSIONS FROM LAWN SIDE OF CONCRETE MOW STRIP UNLESS OTHERWISE NOTED.
6. SEE DETAIL A/SD12.

SITE LAYOUT PLAN

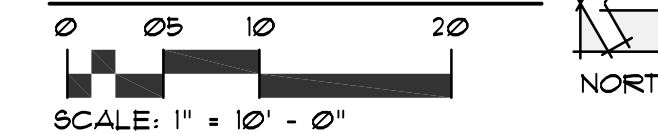


CONCRETE MOW STRIP

NOT TO SCALE



GRADING PLAN





Project Name:

**BUILDING #5
NEW ADA RAMP**
1455 SOUTH 1700 EAST
SALT LAKE CITY, UTAH

Project For:

THE CHURCH OF
**JESUS CHRIST
OF LATTER-DAY SAINTS**

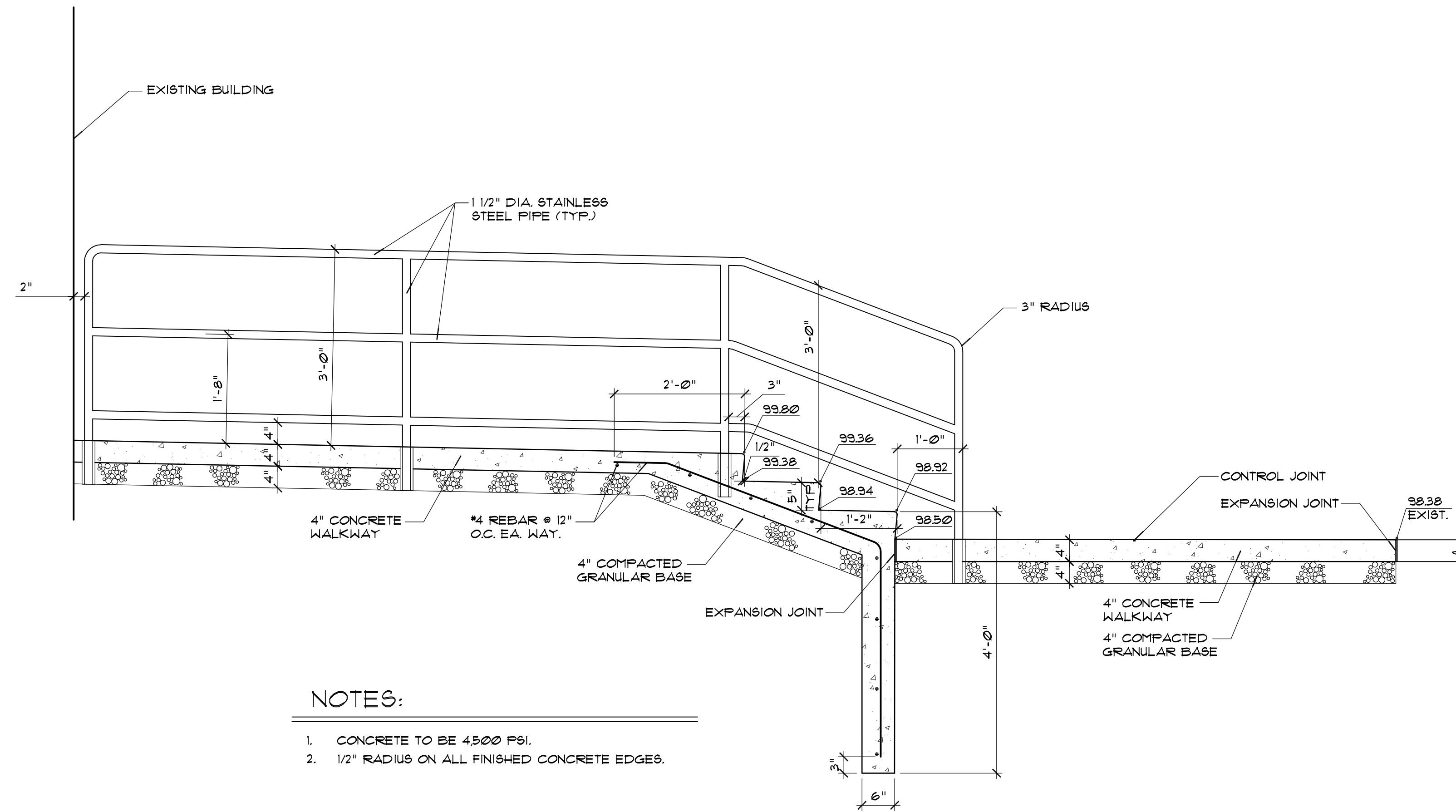
Revisions:

Date: JUNE 04, 2019
Plan Series: -
Property Number: 506-7251
Sheet Title:

SITE DETAILS

Sheet No.:

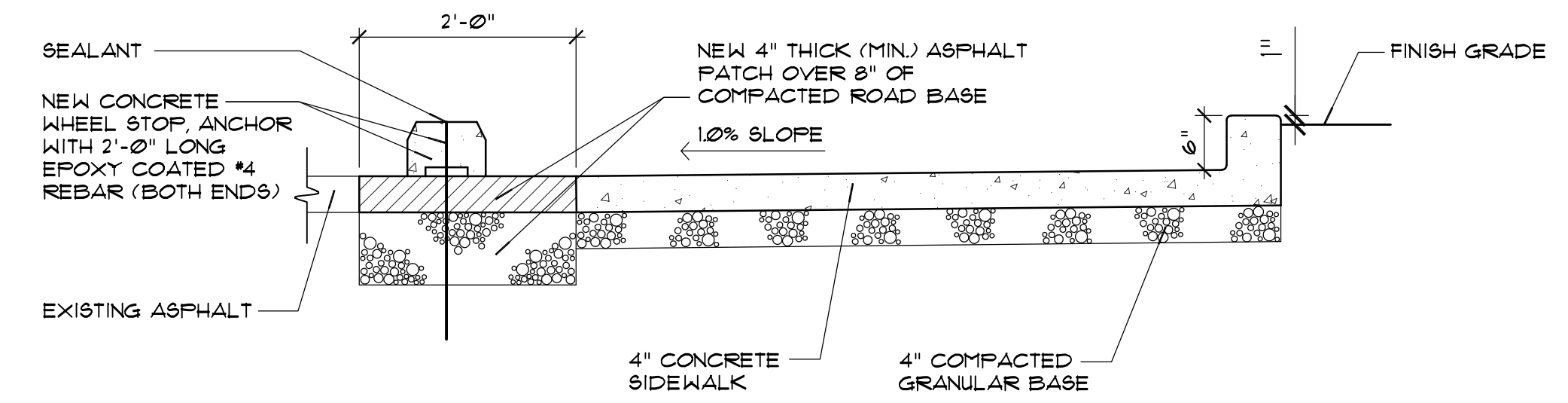
SD1.3



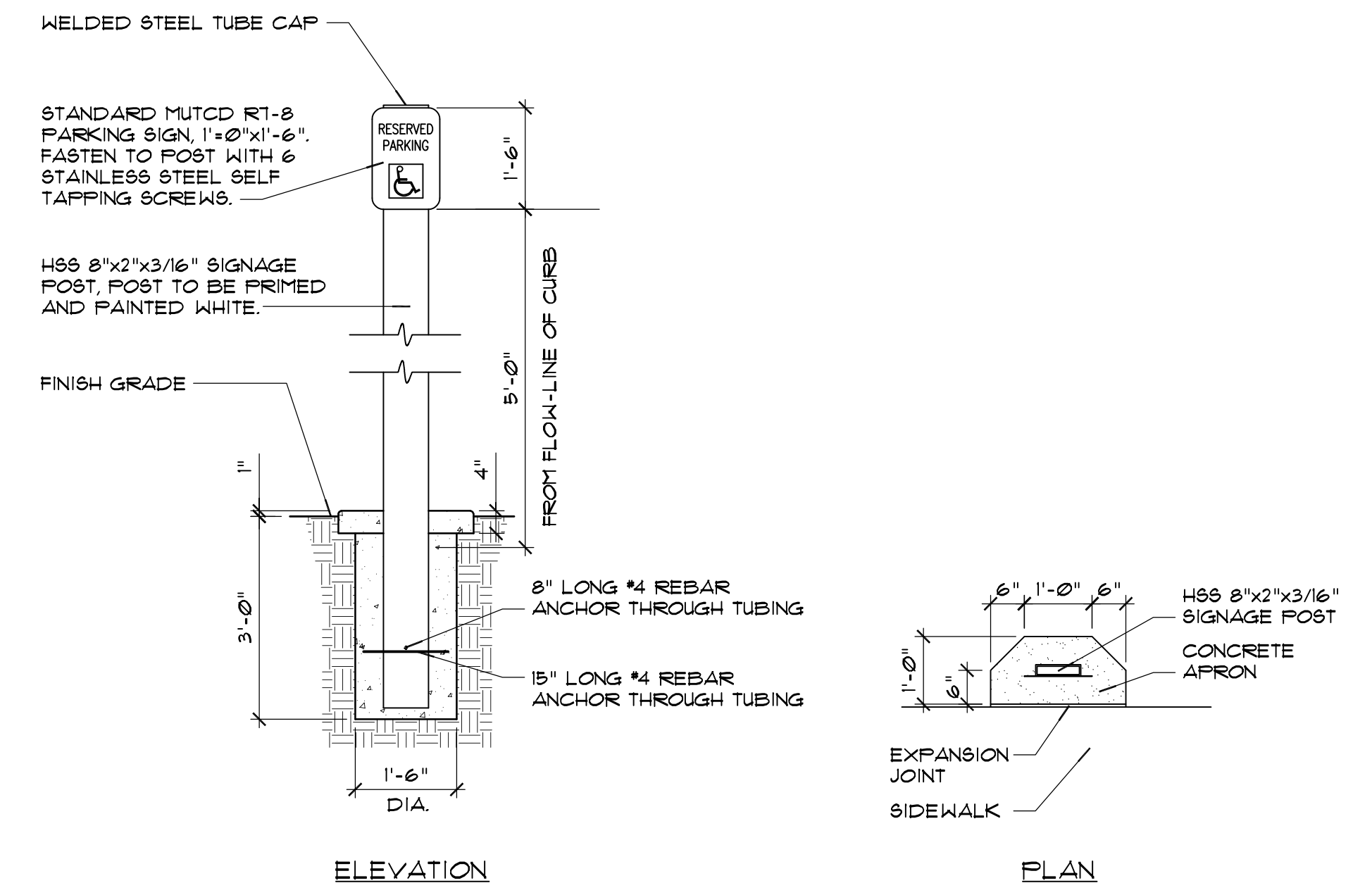
NOTES:

1. CONCRETE TO BE 4500 PSI.
2. 1/2" RADIUS ON ALL FINISHED CONCRETE EDGES.

CONCRETE STAIR AND LANDING SECTION (A)
SCALE: 3/4"=1'-0"



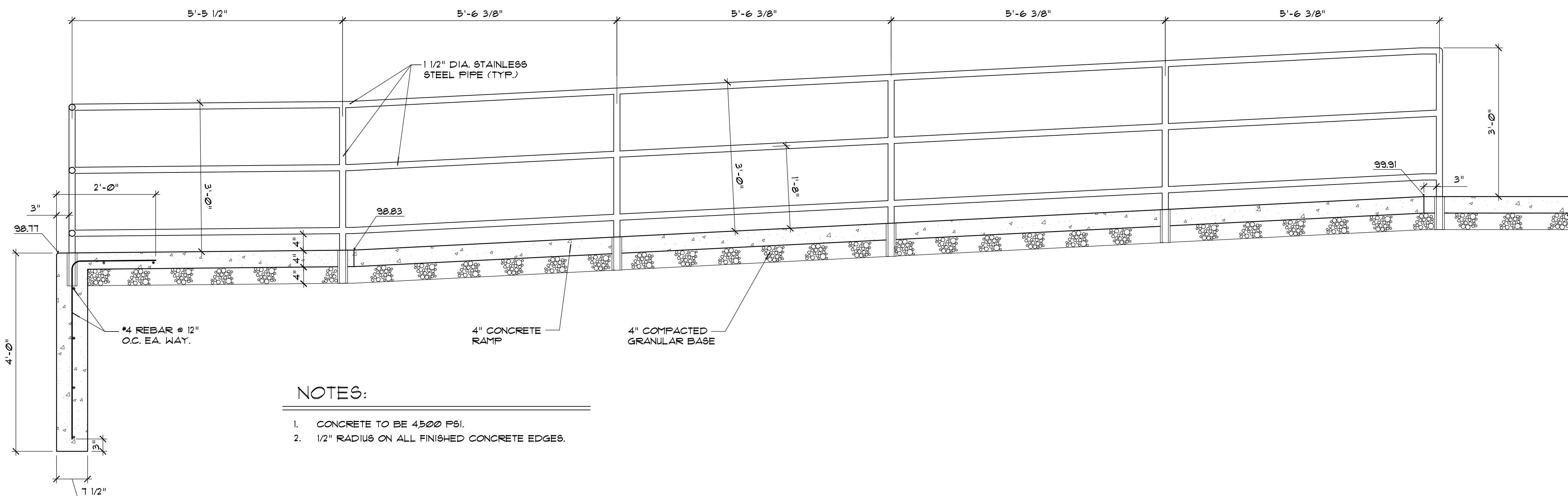
ASPHALT AND SIDEWALK SECTION (B)
SCALE: 3/4"=1'-0"



ELEVATION

PLAN

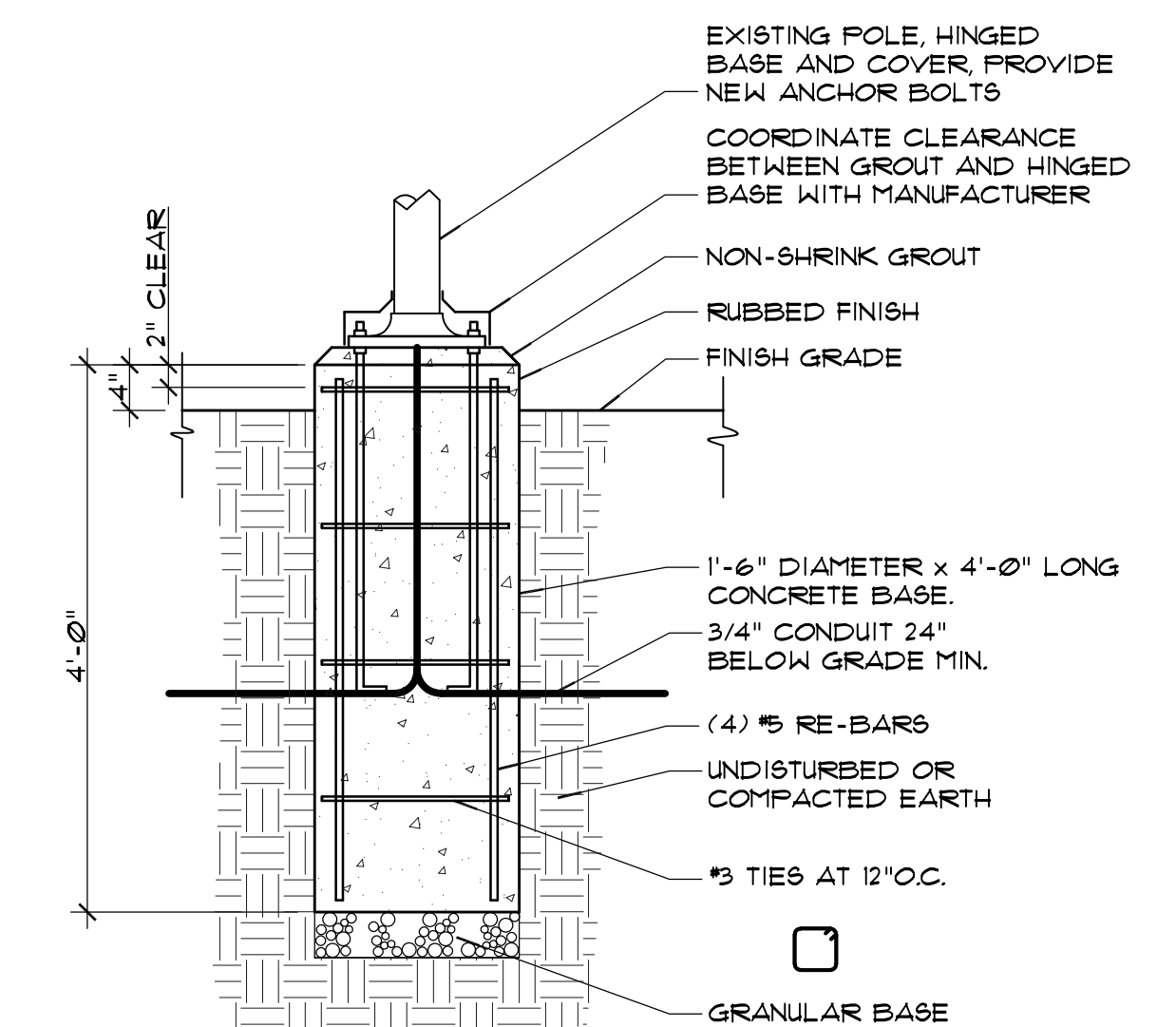
ACCESSIBLE STALL SIGN (C)
SCALE: 1/2"=1'-0"



NOTES:

1. CONCRETE TO BE 4500 PSI.
2. 1/2" RADIUS ON ALL FINISHED CONCRETE EDGES.

CONCRETE RAMP SECTION (D)
SCALE: 3/4"=1'-0"



LIGHT POLE BASE SECTION (E)
SCALE: 3/4"=1'-0"



Project Name:

**BUILDING #5
NEW ADA RAMP**
1455 SOUTH 1700 EAST
SALT LAKE CITY, UTAH

Project For:

THE CHURCH OF
**JESUS CHRIST
OF LATTER-DAY SAINTS**

Revisions:

Date:
JUNE 04, 2019

Plan Series:
-

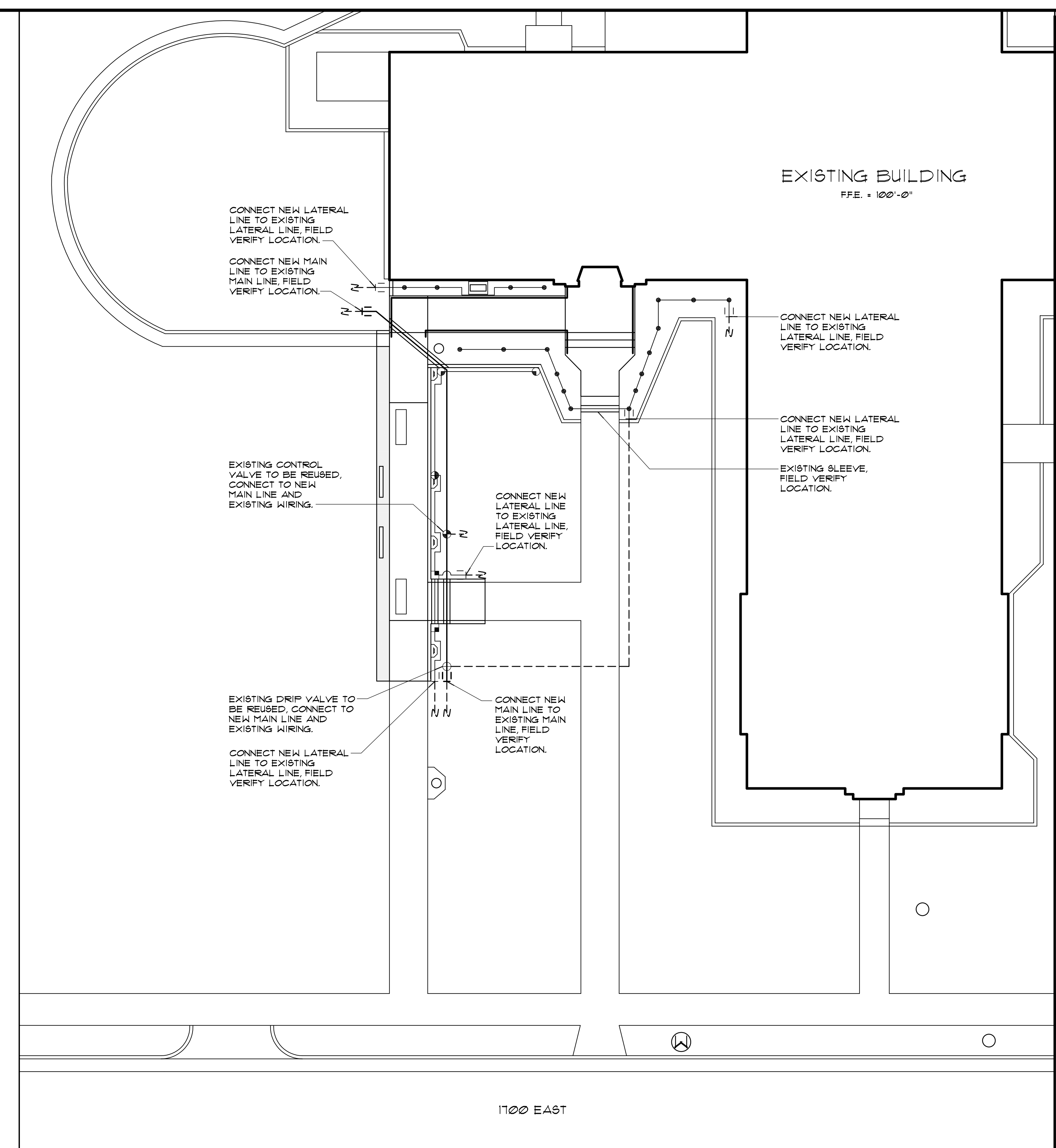
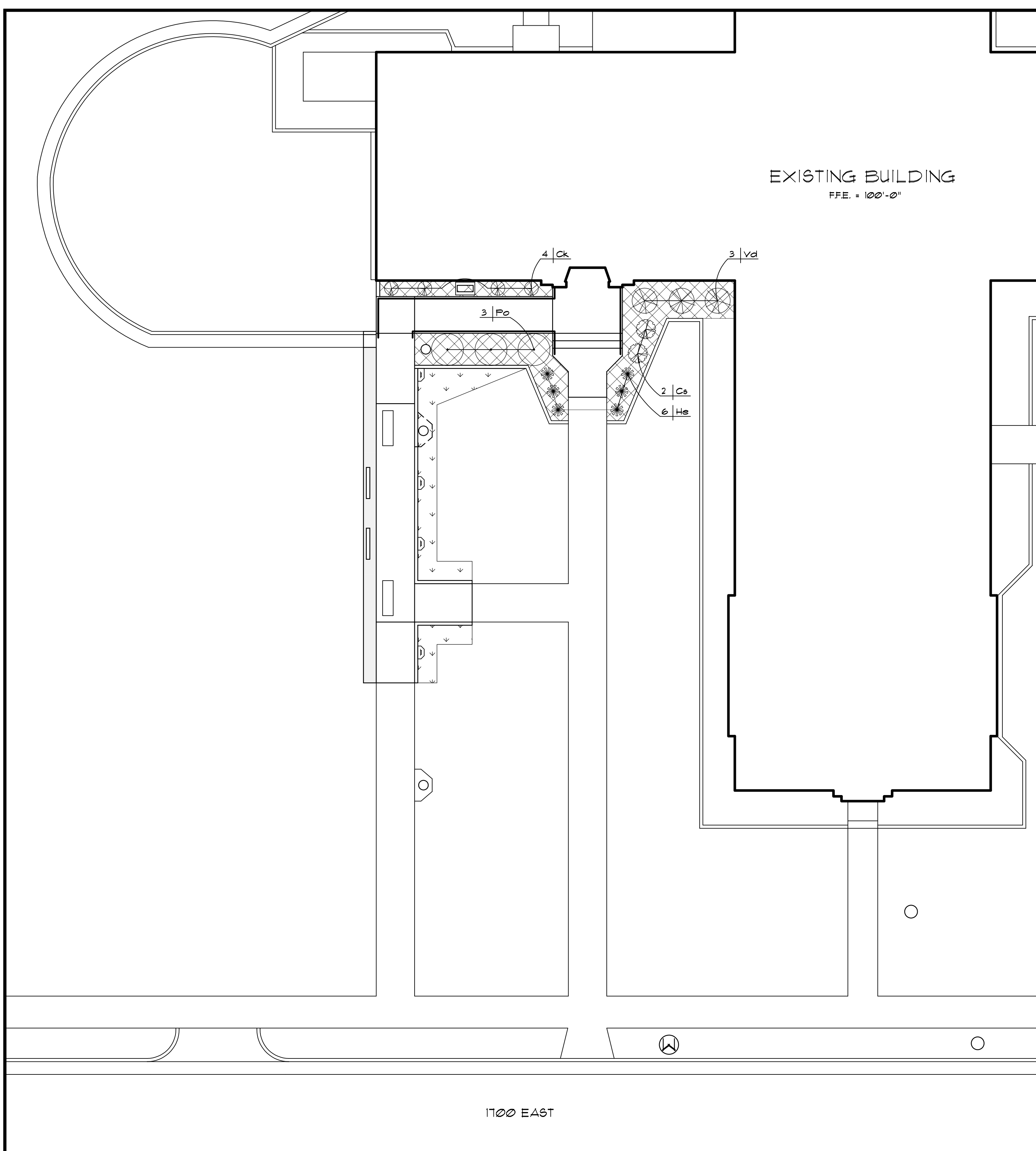
Property Number:
506-7251

Sheet Title:

**IRRIGATION
AND PLANTING
PLANS**

Sheet No.:

L111



PLANT LEGEND								
SHRUBS								
SYM.	ABV.	#	SCIENTIFIC NAME	COMMON NAME	SIZE	HEIGHT	WIDTH	NOTES
⊕	Cs	2	<i>Cornus sericea</i> 'Kelsey'	Kelsey Dwarf Dogwood	5 GAL	12"	12"	SEE DETAIL E/LB01
⊙	Po	3	<i>Physocarpus opulifol.</i> 'Summer Wine'	Summer Wine Ninebark	5 GAL	18"	18"	SEE DETAIL E/LB01
⊗	Vd	3	<i>Viburnum dentatum</i> 'Blue Muffin'	Blue Muffin Viburnum	5 GAL	18"	18"	SEE DETAIL E/LB01
PERENNIALS AND GRASSES								
SYM.	ABV.	#	SCIENTIFIC NAME	COMMON NAME	SIZE	HEIGHT	WIDTH	NOTES
⊕	Ck	4	<i>Calamagrostis</i> 'Karl Foerster'	Feather Reed Grass	1 GAL	--	12"	SEE DETAIL H/LB01
*	He	6	<i>Hemerocallis</i> x 'Fardon Me'	Red Daylily	1 GAL	--	12"	SEE DETAIL H/LB01

PLANTING NOTES

TOP DRESS ALL SHRUB AREAS WITH SHREDDED BARK MULCH (3" DEEP) OVER WEED BARRIER FABRIC. FABRIC SHALL BE INSTALLED AFTER FIRE-EMERGENT HAS BEEN APPLIED.

AREA TO RECEIVE SOD.

- SEE DETAILS AND SPECIFICATIONS FOR ADDITIONAL INFORMATION.
- PLANT QUANTITIES ARE FOR REFERENCE ONLY. CONTRACTOR IS RESPONSIBLE FOR ENSURING THAT THE PLANT TOTALS MATCH THE NUMBER OF SYMBOLS SHOWN ON THE PLANTING PLAN.

PLANTING PLAN
SCALE: 1" = 10' - 0"

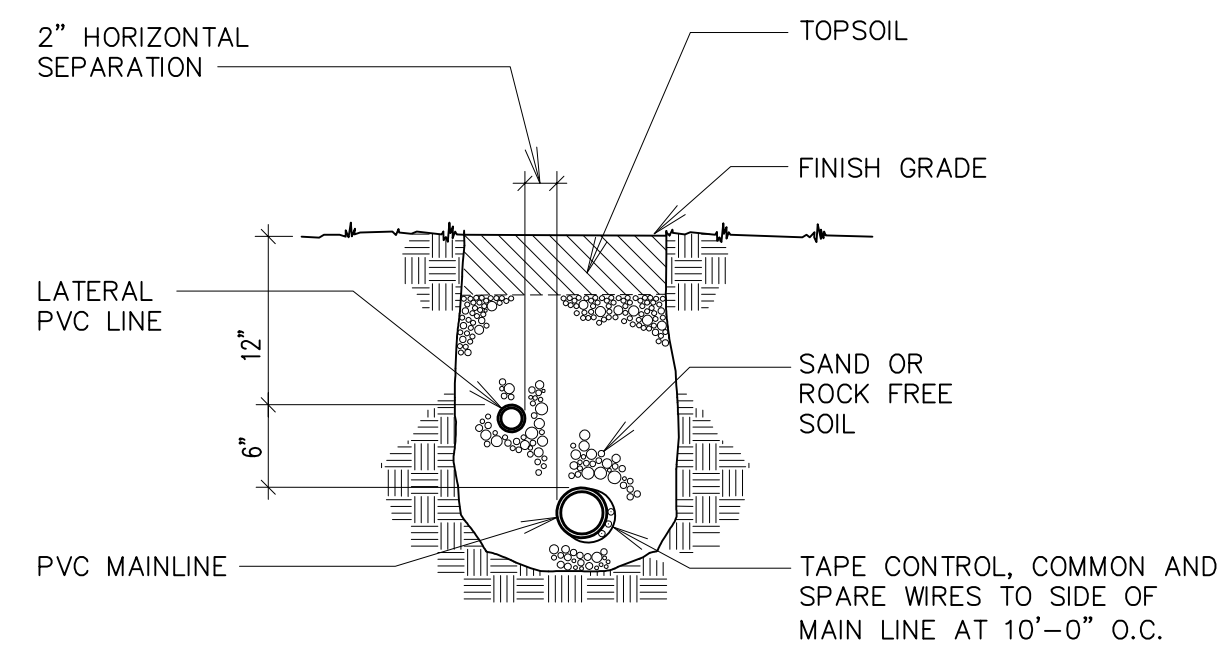
IRRIGATION LEGEND							
SYM.	DESCRIPTION	MANUF.	MODEL #	RAD.	GPM	PSI	NOTES:
⊕	QUARTER CIRCLE POP UP ROTOR	RAINBIRD	5004-PL-MPR-30-Q	30'	123	35	SEE DETAILS B4C/LB01
⊙	HALF CIRCLE POP UP ROTOR	RAINBIRD	5004-PL-MPR-25-H	24'	173	35	SEE DETAILS B4C/LB01
⊗	QUARTER CIRCLE POP UP ROTOR	RAINBIRD	5004-PL-MPR-25-Q	24'	88	35	SEE DETAILS B4C/LB01
—	NEW MAIN LINE		2" SCHED. 40 PVC				SEE DETAIL A/LB01
—	NEW LATERAL LINE		1" SCHED. 40 PVC				SEE DETAIL A/LB01
—	EXISTING MAIN & LATERAL LINES		2" SCHED. 40 PVC				SEE DETAIL A/LB01
—	PIPE / WIRE SLEEVE		SCHED. 40 PVC, SIZE AS REQUIRED				
⊙	2 GPH DRIP SYSTEM EMITTER	RAINBIRD	XBT-20PC				SEE DETAIL D/LB01

IRRIGATION NOTES

- THIS SYSTEM IS BASED UPON AN AVAILABLE STATIC PRESSURE OF 50 PSI MINIMUM AND 50 G.P.M. PRIOR TO CONSTRUCTION, CONFIRM STATIC PRESSURE AND SIZE OF P.O.C.
- LOCATE ALL EXISTING UTILITIES ON SITE PRIOR TO CONSTRUCTION.
- THIS PLAN IS DIAGRAMMATIC. EQUIPMENT MAY BE SHOWN IN PAVED AREAS AND BUILDINGS FOR PLAN CLARITY.
- LOCATE SLEEVES UNDER ALL PAVED SURFACES WHERE LINES CROSS. SLEEVE SIZE SHALL BE 2 SIZES LARGER THAN THE LINE. EXTEND 6" BEYOND PAVED SURFACE ON EACH SIDE.
- LOCATE AND REUSE EXISTING SLEEVES WHERE PRACTICAL.
- REFER TO DETAIL SHEET AND SPECIFICATIONS FOR ADDITIONAL INFORMATION.
- CONNECT DRIP EMITTER ASSEMBLIES TO NEAREST LATERAL LINE.

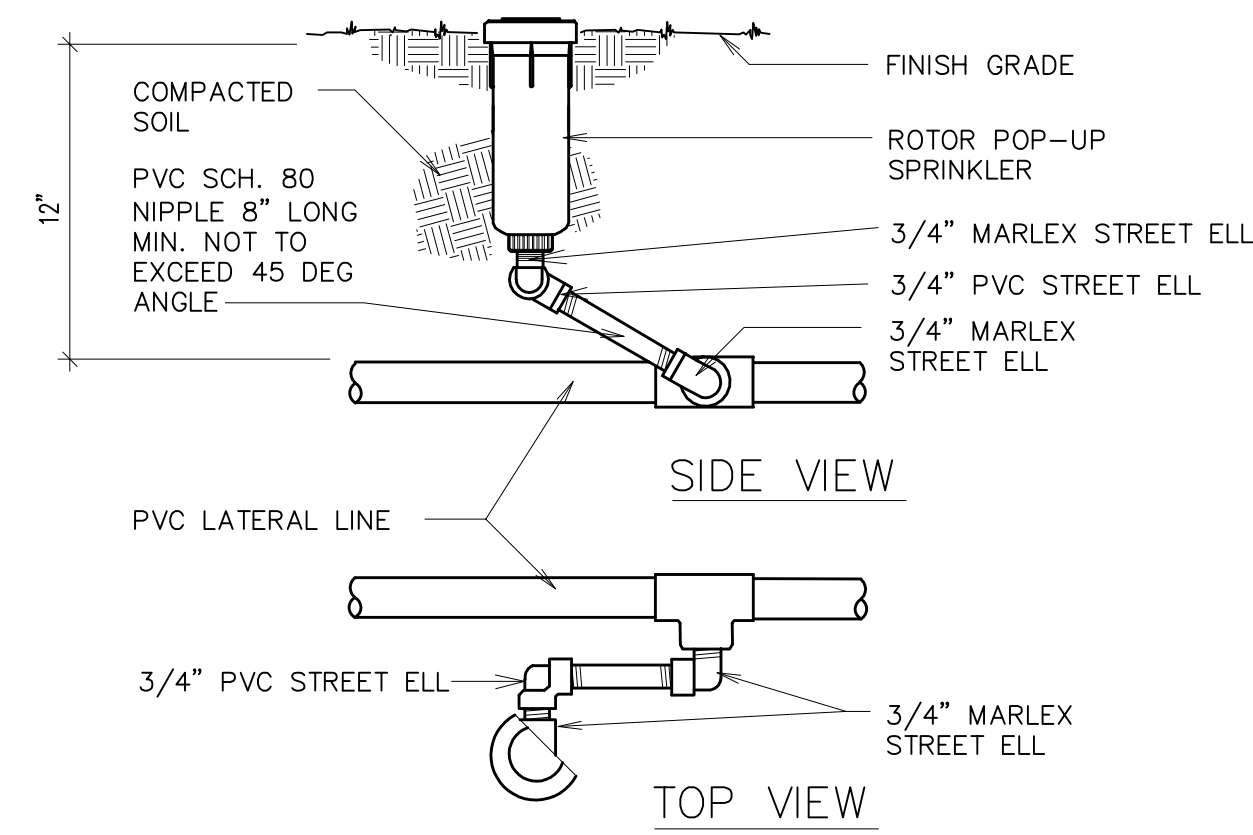
IRRIGATION PLAN
SCALE: 1" = 10' - 0"



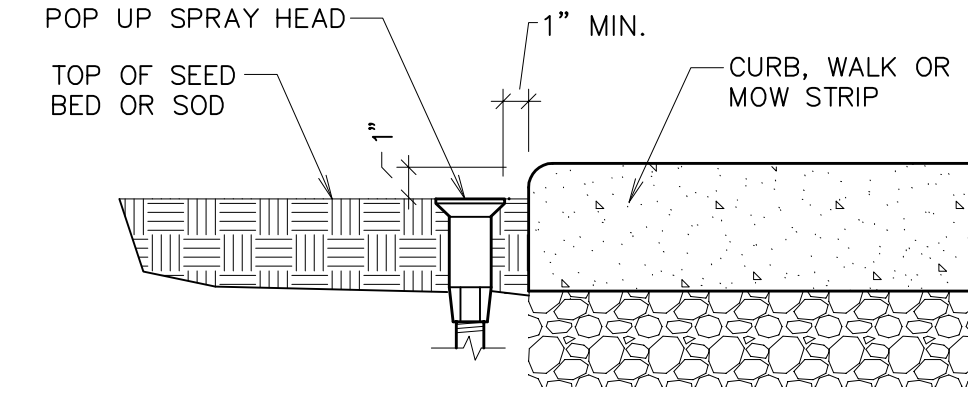


CONVENTIONAL WIRE SYSTEM

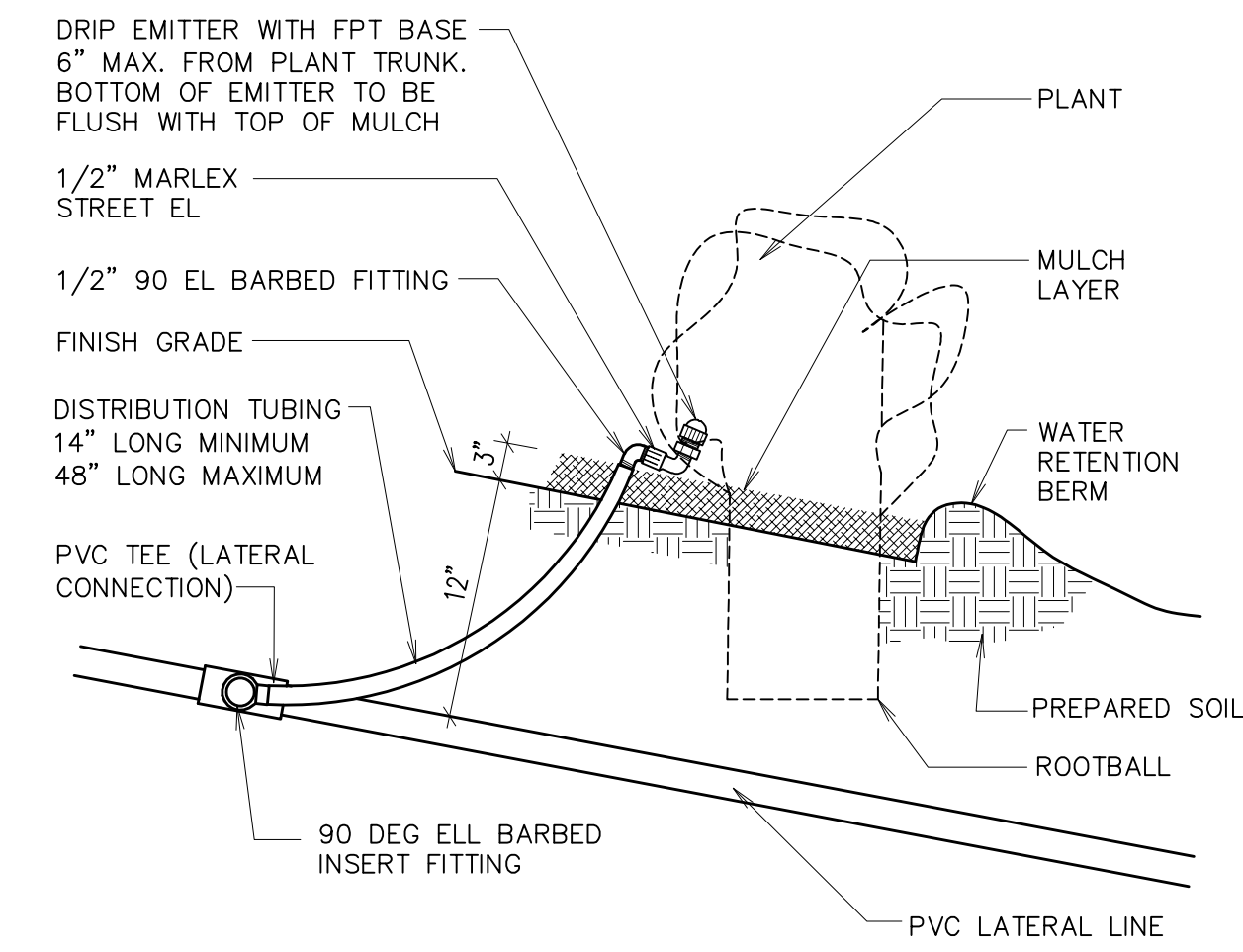
(A) TRENCH SECTION
NO SCALE



(B) ROTOR POP-UP HEAD
NO SCALE

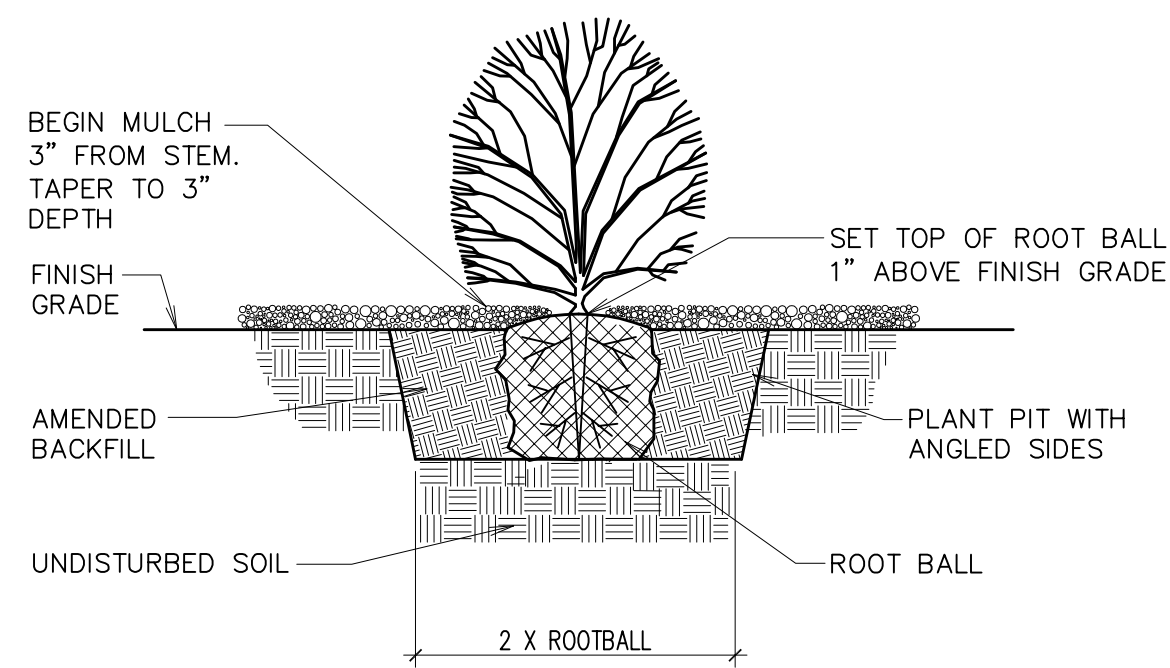


(C) SPRAY HEAD OR ROTOR NEXT TO CURB OR WALK
NO SCALE

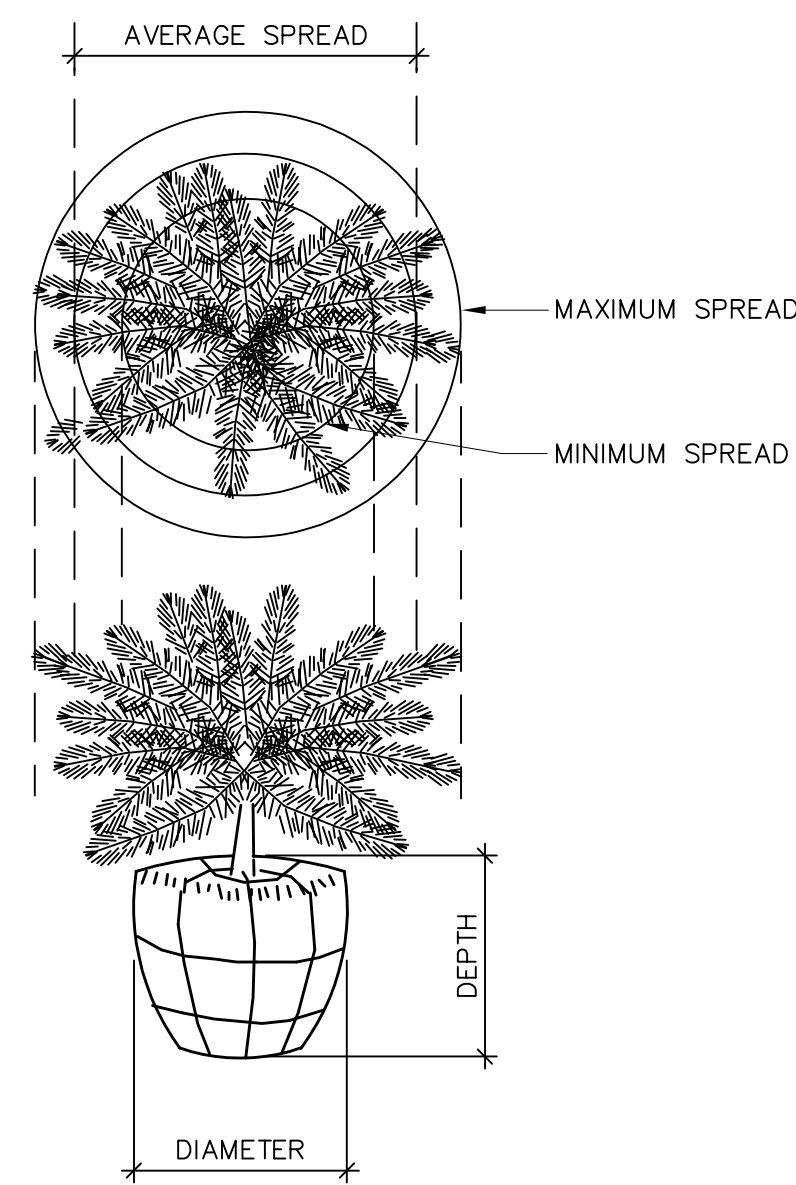


NOTES:
1. ON SLOPES, LOCATE EMITTER UPHILL OF THE PLANT.

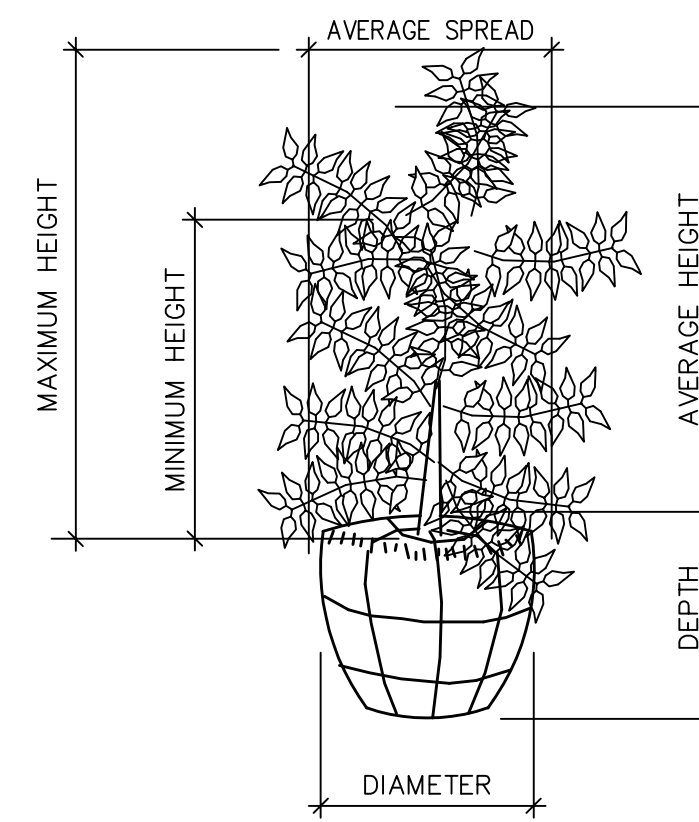
(D) DRIP EMITTER
NO SCALE



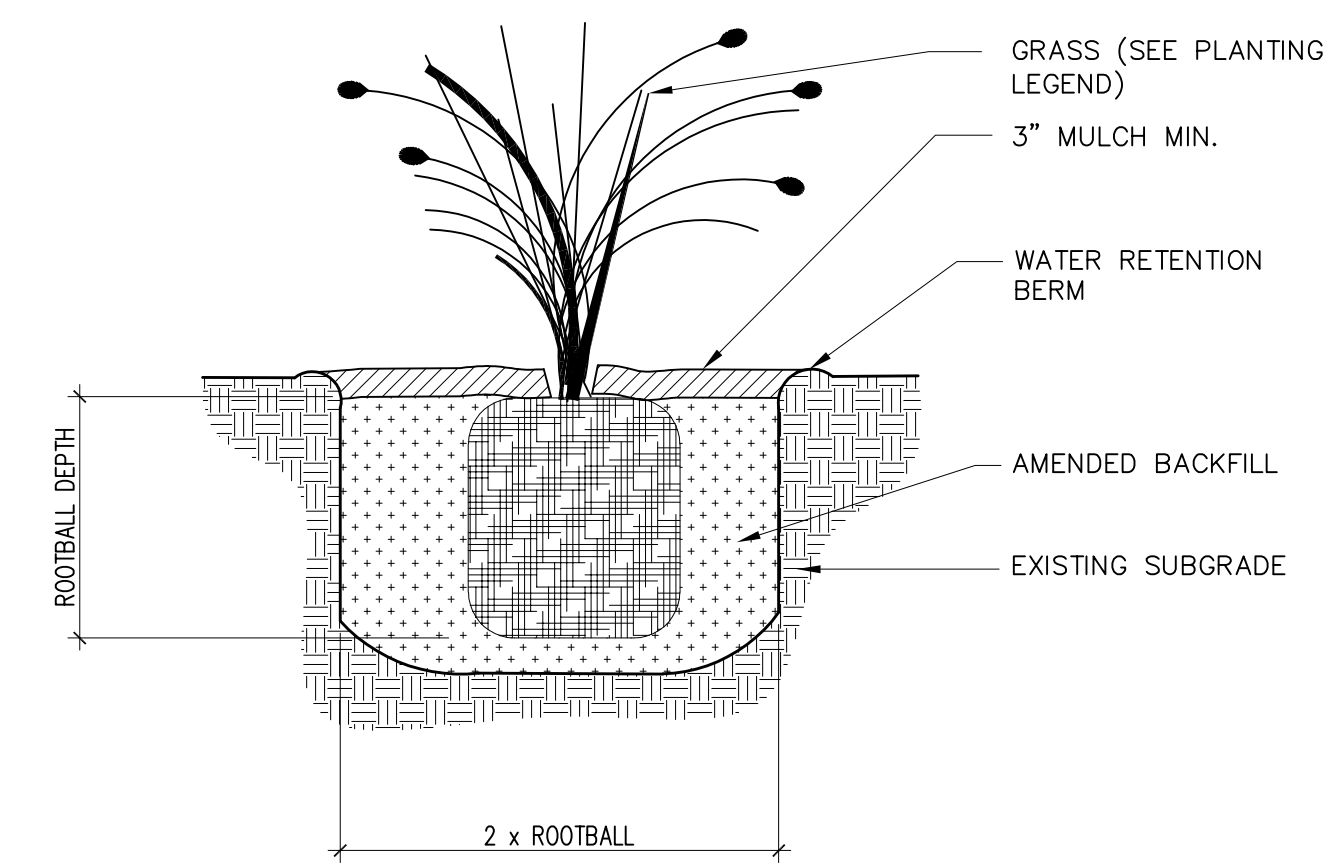
(E) SHRUB PLANTING DETAIL
NOT TO SCALE



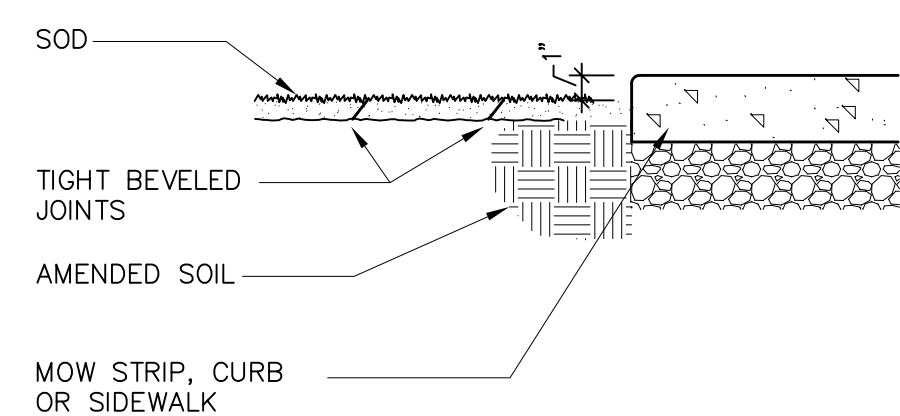
(F) TYPICAL MEASUREMENT FOR PROSTRATE TYPE PLANTS
NOT TO SCALE



(G) TYPICAL MEASUREMENT FOR BROAD UPRIGHT TYPE
NOT TO SCALE



(H) ORNAMENTAL GRASSES PLANTING
NOT TO SCALE



(J) SOD INSTALLATION
NOT TO SCALE

Project Name:

**BUILDING #5
NEW ADA RAMP**
1455 SOUTH 1700 EAST
SALT LAKE CITY, UTAH

Project For:

**THE CHURCH OF
JESUS CHRIST
OF LATTER-DAY SAINTS**

Revisions:

Date:
JUNE 04, 2019
Plan Series:
-
Property Number:
506-7251
Sheet Title:

**IRRIGATION
DETAILS**

Sheet No.:

L501

AEC Standard Landscape Details	
Details Downloaded	22 FEBRUARY 2018
Details Edited	04 JUNE 2019