

ADDENDUM

Project: Cascade 1, 2 Stake Suite Remodel

Project No.: 513089117020101

Addendum No.: 1

Project Address: 481 E. Center St. Orem, UT

Date: 04-03-2017

Owner: Corporation of the Presiding Bishop of The Church of Jesus Christ
of Latter-day Saints, a Utah corporation sole

From (Architect): RVA Architects, Inc.

Instructions to Prospective Bidders:

This Addendum forms a part of the Contract Documents and modifies the original Bidding Documents and/or prior Addenda as noted below. All conditions, requirements, materials and workmanship are to be as described in the Contract Documents unless specifically stated otherwise. This Addendum consists of 5 page(s) and the attached drawing(s), Sheet(s) AD-1.1, dated 04-03-2017.

1. Changes to prior Addenda:

- a. N/A

2. Changes to Bidding Requirements:

- a. Allowance: Include \$3,000.00 for Building Permit Allowance.

3. Changes to Conditions of the Contract:

- a. N/A

4. Changes to Specifications:

- a. Add specification Section 09 7226 Sisal Wall Covering.

5. Changes to Drawings:

- a. Sheet A-1.1- Demolition Floor Plan. Note 05 to be "Remove coat rack."
- b. Sheet A-1.1- Demolition Floor Plan. Add Note # 14. "Outlets in demolished wall to be disconnect back to nearest junction box".
- c. Sheet A-1.1 – Demolition Floor Plan. Add Note #15. "Remove carpet in the existing clerk's office. Remaining carpet in project area to have carpet protection to the corridor, with walk-off mats."
- d. Sheet A-1.1 – General Notes: Add Note #6. "Provide dust protection of all supply and return air ventilation grills".
- e. Sheet A-1.1 – General Notes: Add Note #7. "Construction area should be cleaned each day for use in the evening."
- f. Sheet A-1.1 – Floor Plan: Change Note #02. "New 2x4 framed wall with textured and painted 5/8" drywall."
- g. Sheet A-1.1 – Floor Plan: Change Note #03. "At in-fill the framing thickness to match thickness of block wall."
- h. Sheet A-1.1 – Floor Plan: Modify Note #04. "Door frame to be wood. Wood and stain to match existing."
- i. Sheet A-1.1 – Floor Plan: Modify Note #07. "Existing drywall under existing acoustical tile to remain. Add an additional ½" drywall to level ceiling prior to installing new acoustical tile."
- j. Sheet A-1.1 – Floor Plan: Modify Note #10. "New raceway outlets to be placed under the countertop with (2) grommets in the countertop to allow a power cord to pass thru and connect."
- k. Sheet A-1.1 – Floor Plan: Add Note #11. "Provide and glue ¼" drywall on all block walls in Waiting Room, Clerks Office and north wall of the Stake Presidents Office. Drywall to be textured and painted, with sisal wainscot below chair rail (3'-2" to floor line). Chair rail to match building stain color." See attached AD-1.1.
- l. Sheet A-1.1 – Floor Plan: Add an electrical outlet west of the Clerks door in the Clerks office at standard height for the copy machine.

End of Addendum

SECTION 09 7226**SISAL WALL COVERING****PART 1 - GENERAL****1.1 SUMMARY**

- A. Includes But Not Limited To:
 - 1. Furnishing and installing wall covering 'Type A' (Sisal) as described in Contract Documents.
- B. Related Requirements:
 - 1. Section 06 4512: 'Architectural Woodwork Wood Trim' for wood trim for sisal wall covering.
 - 2. Section 09 2900: 'Gypsum Board' for priming of gypsum board.

1.2 REFERENCES

- A. Definitions:
 - 1. Class A: Fire classification for product with flame spread rating of no more than 25 and smoke developed rating not exceeding 50, when tested in accordance with ASTM E84 or UL 723.
 - 2. Flame Spread: The propagation of flame over a surface.
 - 3. Flame Spread Index: The numerical value assigned to a material tested in accordance with ASTM E84 or UL 723.
 - 4. Smoke-Developed Index: The numerical value assigned to a material tested in accordance with ASTM E84 or UL 723.
 - 5. Surface Burning Characteristic: Rating of interior and surface finish material providing indexes for flame spread and smoke developed, based on testing conducted according to ASTM Standard E84 or UL 723.
- B. Reference Standards:
 - 1. ASTM International:
 - a. ASTM E84-14, 'Standard Test Method for Surface Burning Characteristics of Building Materials'.
 - 2. International Building Code (IBC) (2009 and 2012 Edition):
 - a. Chapter 8, 'Interior Finishes':
 - 1) Section 803, 'Wall And Ceiling Finishes':
 - a) 803.1.1, 'Interior Wall and Ceiling Finish Materials'.
 - b) 803.1.3, 'Room Corner Test for Textile Wall Coverings and Expanded Vinyl Wall Coverings'.
 - c) 803.1.4, 'Acceptance Criteria for Textile and Expanded Vinyl Wall Coverings Tested to ASTM E84 or UL 723'.
 - 3. National Fire Protection Association:
 - a. NFPA 101: 'Life Safety Code' (2015 Edition).
 - b. NFPA 265: 'Standard Methods of Fire Tests for Evaluating Room Fire Growth Contribution of Textile Coverings on Full Height Panels and Walls', (2011 Edition).
 - 4. Underwriters Laboratories, Inc.:
 - a. UL 723: 'Standard for Safety Test for Surface Burning Characteristics of Building Materials'; (2010 - Tenth Edition).

1.3 SUBMITTALS

- A. Action Submittals:
 - 1. Product Data:
 - a. Manufacturer's literature or cut sheet.
 - b. Maintenance instructions.

- c. Color and pattern selection.
- B. Informational Submittals:
- 1. Test And Evaluation Reports:
 - a. Copies of Quality Assurance requirements for 'Class A' flame spread rating and 'Room-Corner Test'.
 - 2. Qualification Statement:
 - a. Installer:
 - 1) Provide Qualification documentation if requested by Architect or Owner.
- C. Closeout Submittals:
- 1. Include following in Operations And Maintenance Manual specified in Section 01 7800:
 - a. Operations and Maintenance Data:
 - 1) Cleaning and maintenance instructions.
 - b. Record Documentation:
 - 1) Manufacturers Documentation:
 - a) Manufacturer's literature or cut sheets.
 - b) Color and pattern selections.

1.4 QUALITY ASSURANCE

- A. Regulatory Agency Sustainability Approvals:
- 1. Fire-Test-Response Characteristics: As determined by testing identical wall coverings applied with identical adhesives to substrates according to test method indicated below by qualified testing agency. Identify products with appropriate markings of applicable testing agency.
 - a. Surface-Burning Characteristics:
 - 1) Wall covering shall have Class A flame spread rating in accordance with ASTM E84 or UL 723 Type 1.
 - a) Class A (Flame spread index 0-25; Smoke-developed index 0-450).
 - b) Flash point: None.
 - 2. Passage of 'Room-Corner Test' as recognized by AHJ, is required for system. Adhesive cited in test literature is required for installation of wall covering on Project.
 - a. Room Corner Tests:
 - 1) ASTM E84, 'Standard Test Method for Surface Burning Characteristics of Building Materials'.
 - 2) IBC 803.1.3, 'Room Corner Test for Textile Wall Coverings and Expanded Vinyl Wall Coverings'.
 - 3) IBC 803.1.4, 'Acceptance Criteria for Textile and Expanded Vinyl Wall Coverings Tested to ASTM E84 or UL 723'.
 - 4) NFPA 265, 'Standard Methods of Fire Tests for Evaluating Room Fire Growth Contribution of Textile Coverings on Full Height Panels and Walls'.
 - 5) UL 723, 'Standard for Safety Test for Surface Burning Characteristics of Building Materials'.
- B. Qualifications:
- 1. Installer: Requirements of Section 01 4301 applies, but not limited to following:
 - a. Minimum three (3) years experience in wall covering installations.
 - b. Minimum five (5) years satisfactorily completed projects of comparable quality, similar size, and complexity in past three (3) years before bidding.
 - c. Agree to view 'No-Flame Sisal Wall Covering Recommended Installation Procedures' provided by Owner found on internet in AEC Webpage under Training in Menu tab. Contact Architect for access to video. This requirement may be waived by Owner, if Installer has viewed video before or can document at least two (2) satisfactorily completed projects of comparable size using sisal wall coverings in past three (3) years before bidding.
 - d. Upon request, submit documentation.

1.5 DELIVERY, STORAGE, AND HANDLING

- A. Delivery And Acceptance Requirements:
 - 1. Deliver materials in sealed containers with Manufacturer's labels intact.
- B. Storage And Handling Requirements:
 - 1. Store materials in protected area at temperatures below 90 deg F (32 deg C) and above 50 deg F (10 deg C). Keep from freezing.
 - 2. Keep container tightly closed in a well ventilated area, and store upright when not in use.
 - 3. Shelf life: One (1) year minimum - Unopened containers.

1.6 FIELD CONDITIONS

- A. Ambient Conditions:
 - 1. Apply when the temperature is between 50 deg F (10 deg C) minimum and 100 deg F (38 deg C) maximum and relative humidity is less than seventy five (75) percent.
 - 2. Provide good ventilation.

1.7 WARRANTY

- A. Manufacturer Warranty:
 - 1. Provide five (5) year warranty against manufacturing defects.

PART 2 - PRODUCTS

2.1 MANUFACTURERS

- A. Manufacturer Contact List:
 - 1. Design Materials Inc, Kansas City, KS www.dmikc.com.
 - 2. Fibreworks, Louisville, KY www.fibreworks.com.

2.2 DESCRIPTION

- A. Colors:
 - 1. Category Four Approved Products. See Section 01 6200 for definitions of Categories.
 - a. Fibreworks: To be selected from manufacturers standard colors.
 - b. Design Materials: To be selected from manufacturers standard colors.

2.3 MATERIALS

- A. Sisal Wall Covering:
 - 1. 100 percent fire-treated sisal yarn.
 - 2. 1/4 inch (6 mm) pile height, 48 oz/sq yd (1 627 grams/sq meter) minimum. Sisal to be installed full height on walls shall be furnished in 9 or 13 foot (2.75 or 3.96 meters) wide goods.
 - 3. Reversible weave type, without backing.

2.4 ACCESSORIES

- A. Wall Covering Adhesive:
 - 1. Category Four Approved Products. See Section 01 6200 for definitions of Categories.
 - a. 257 Sisal Adhesive by Fibreworks.
 - b. Sisal Adhesive No. 1-422 by Design Materials.

- B. Seam Cement:
 - 1. Type Two Acceptable Products:
 - a. 8415 Glue-Down Carpet Seam Adhesive by Roberts Consolidated Industries, Div QEP, Henderson, NV www.robertsconsolidated.com.
 - b. Equal as recommended by Wall Covering Manufacturer with approval of Architect before installation. See Section 01 6200.

PART 3 - EXECUTION

3.1 INSTALLERS

- A. Acceptable Installers:
 - 1. Meet Quality Assurance Installer Qualifications as specified in Part 1 of this specification.

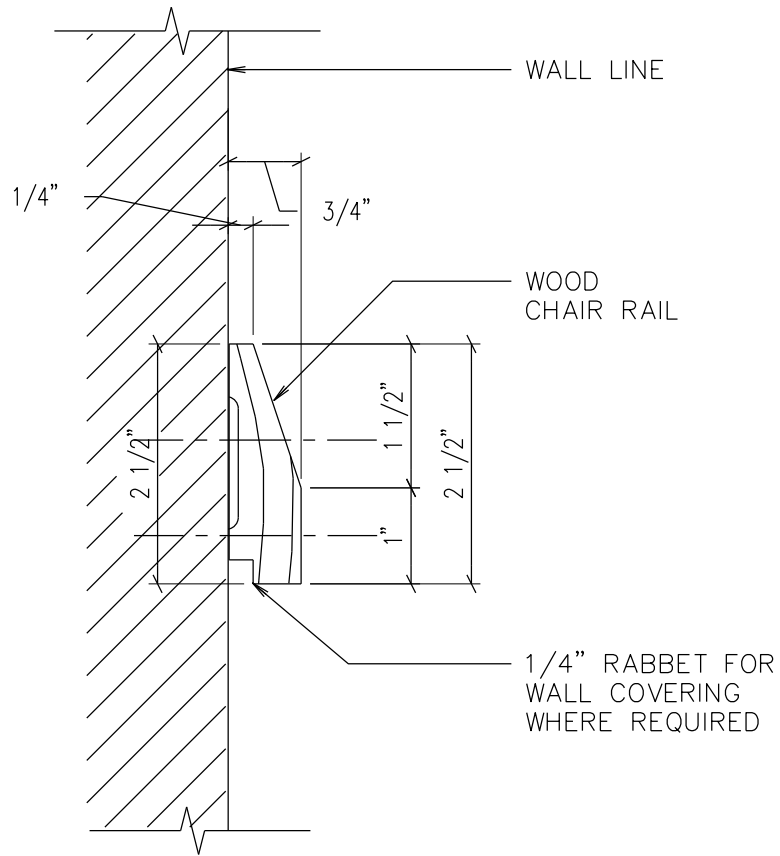
3.2 EXAMINATION

- A. Verification Of Conditions:
 - 1. Examine substrate and verify that it is suitable for installation of sisal wall covering.
 - 2. Notify Architect of unsuitable conditions in writing.
 - a. Do not install over unsuitable conditions.
 - 3. Commencement of Work by installer is considered acceptance of substrate.

3.3 INSTALLATION

- A. Apply wall covering in accordance with Manufacturer's instructions, available on DVD from Owner through Architect. See Quality Assurance Installer Qualifications as specified in Part 1 of this specification.
- B. Using specified adhesive, glue continuously to surface to be covered with wall covering. Apply adhesive in accordance with Manufacturer's recommendations.
- C. Run 'ribs' in weaving horizontally (panel style) when installing wall covering full height. If sisal installed only as wainscoting, 'ribs' may be installed vertically. Install wall covering so it extends to within **1/8 inch (3 mm)** of floor slab.
- D. Carry sisal around corners approximately **6 inch (152 mm)** making no outside corner cuts.
- E. Apply wall covering in one piece on walls adjacent to stairs leading to Platform to avoid unsightly and challenging seams.

END OF SECTION



G CHAIR RAIL DETAIL
 NTS